

SECTOR

Airlines

Analysis and Synthesis - World



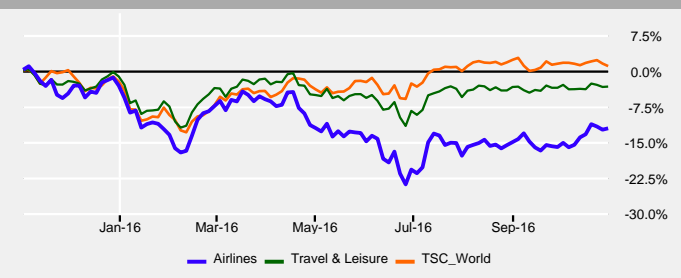
November 1, **2016**



Airlines (WO)

Closing price of November 1, 2016

Comparison [November 3, 2015 - November 1, 2016]



The sector Airlines represents approximately 20% of the market capitalization of the group Travel & Leisure and less than 1% of the World market with 49 companies being followed regularly by the analysts.

The sector Airlines is currently trading 13% below its 52 week high and 16% above its 52 week low (bi-weekly closing).

Performance since November 3, 2015: -12.3% vs. -3.4% for the group Travel & Leisure and 0.9% for the TSC_World.

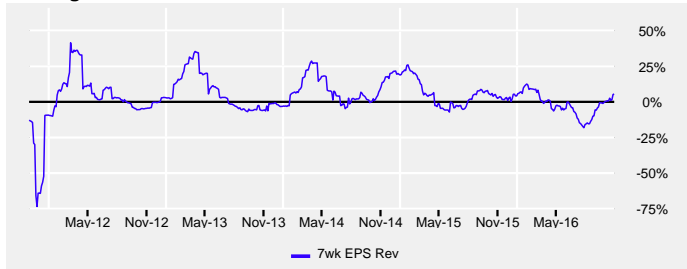
The current % of stocks over their Medium Term technical trend (MTT) is 46.9%.

	Market Value	Perf YtD	Nb of Stocks	Mkt Cap in \$bn	Stars	Risk Zone	G/PE Ratio	LT P/E	LT Growth	4wk Perf	% of Stocks in Uptrend
Airlines (WO)	245.77	-9.3%	49	300.17	★★★★★		0.96	9.2	7.1%	4.3%	46.9%
Travel & Leisure (WO)	293.02	-2.1%	240	1,351.91	★★★★★		1.06	14.4	13.1%	0.3%	29.2%
TSC_World (WO)	240.40	3.3%	6,407	58,417.96	★★★★★		1.19	15.3	19.3%	-0.7%	29.6%

Price evaluation rating

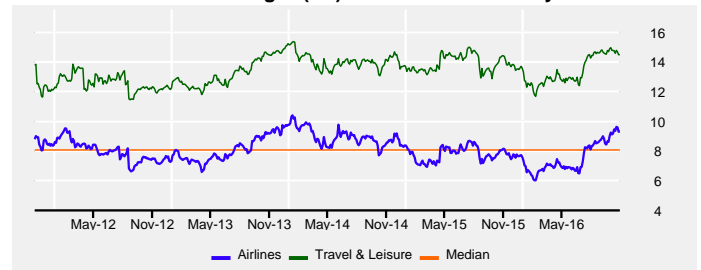
In order to assess whether an index is correctly valued, we focus on Peter Lynch's broadly accepted methodology of comparing the projected earnings growth and dividend with the estimated PE ratio. Based on this approach, we feel this sector is currently slightly undervalued. A "Forecasted Growth + Estimated Dividend Yield/ Estimated Price Earnings" ratio higher than 0.9 indicates that the index's price includes a discount to growth of -6.2%.

Earnings revision trend



Compared to seven weeks ago, the analysts have raised (5.0%) their earnings estimates. This positive trend began October 18, 2016 at a price of 242.3.

"Price to Estimated Earnings" (PE) - Evolution over five years



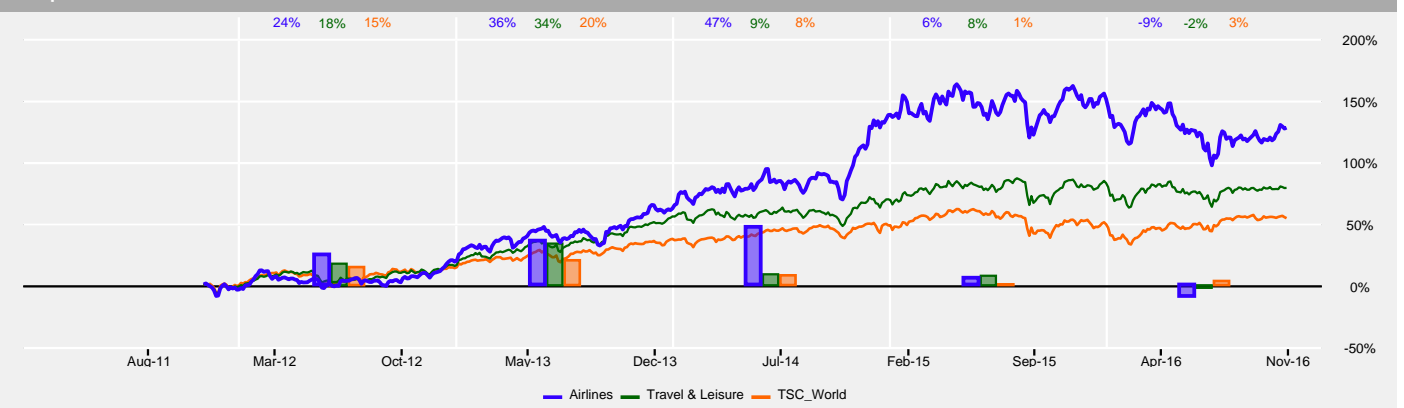
The estimated PE is calculated on the basis of the underlying stocks. While the PE of the sector Airlines is 9.2, the PE of the group to which it belongs (Travel & Leisure) is markedly higher (14.4); this indicates that the sector is trading lower than its group. Historically speaking, this sector is currently trading significantly higher than its median of 8.0.

Technical trend

The 40-day Medium Term Technical Trend has been positive since September 6, 2016. The confirmed Technical Reverse point (Tech Reverse - 1.75%) is currently 4% lower.

However, this positive technical trend is not confirmed by the percentage of stocks trading above their average, as this number is currently 46.9%. This indicates that the majority of stocks are not actually participating in the current rise, but the stocks with the largest market capitalizations in the sector are trending up and pulling the sector above its average.

Comparison [November 2, 2011 - November 1, 2016]



Performance over 5 years

On a 5 year moving average, the performance of the sector Airlines is 127.2%, vs. 79.0% for the group Travel & Leisure and 54.2% for the TSC_World. During this period, the high of 283.9 was reached on April 2015 and the low of 98.1 in the month of November 2011.

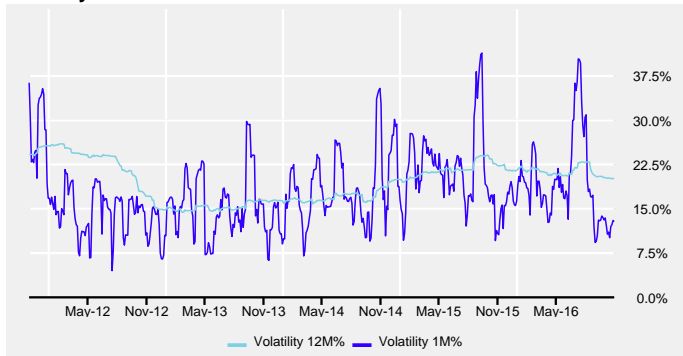


Airlines (WO)

Closing price of November 1, 2016

	Market Value	Perf YtD	Nb of Stocks	Mkt Cap in \$bn	Stars	Risk Zone	G/PE Ratio	LT P/E	LT Growth	4wk Perf	% of Stocks in Uptrend
Airlines (WO)	245.77	-9.3%	49	300.17	★★★★★		0.96	9.2	7.1%	4.3%	46.9%

Volatility



The volatility is also used as a risk factor. It measures the magnitude of the high and low movements of a stock or index. The more the volatility is high, the more risky a sector is considered to be.

As of the last update, the monthly volatility of (12.7%) is lower than the last few years' average of (17.8%). The low magnitude of short term price fluctuations indicates a lull in the market.

On the other hand, long term volatility 20.0% of the sector is clearly higher than that of the group Travel & Leisure (13.7%), reflecting much higher price variations at the sector level than at the level of the group to which it belongs.

The risk factor in declining markets

The "Bear Market Factor" measures the behavior of the sector Airlines in declining markets. In this context, the sector Airlines has a tendency to amplify the drops of the index TSC_World.

This behavior indicates a true element of risk during market declines. The sector Airlines has a tendency to amplify the drops in the index by 0.20%.

The risk factor in rising markets

The "Bad News Factor" measures a sector's corrections in a rising market phase.

In this configuration, the market slightly sanctions the sector Airlines when there is specific pressure in this particular economic activity.

When the sector declines in a rising market its average deviation is -1.42%.

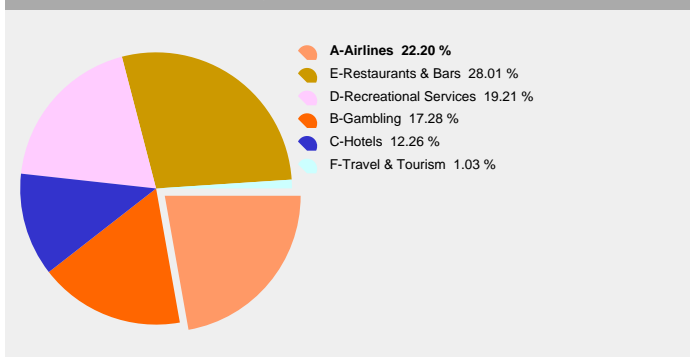
Risk analysis summary

Generally speaking, an investment in the Airlines sector carries a high risk because of the Bear Market factor that strongly amplifies the risk.

Checklist (Airlines)

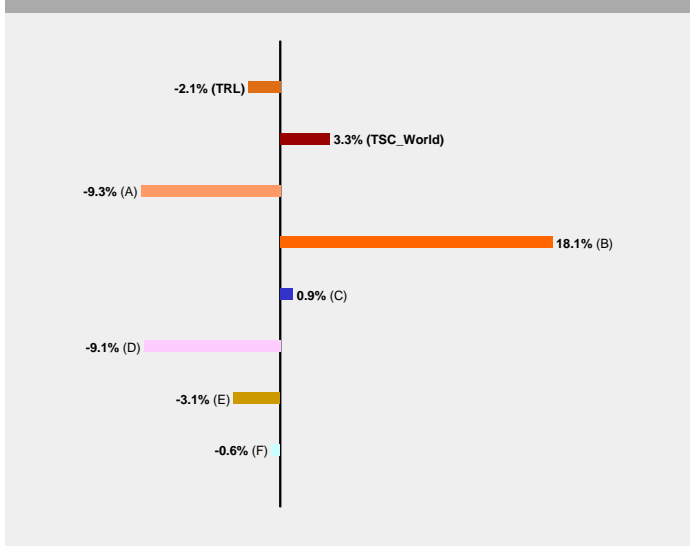
Stars	★★★★★	Very strong interest since October 25, 2016.
Earnings Rev Trend	★	Analysts positive since October 18, 2016
Valuation Rating	★	Moderately undervalued
MT Tech Trend	★	Market positive since September 6, 2016
4wk Rel Perf	4.3% ★	vs. TSC_World
Risk Zone		The industry is classified in the high-risk zone since July 5, 2016.
Bear Mkt Factor		Risky positioning during market declines
Bad News Factor		Slight market sanction in case of specific pressure

Allocation by sector, of the group Travel & Leisure



The largest sector in terms of market capitalization Restaurants & Bars represents 28.0% of the group Travel & Leisure. These sectors follow, in size order, Airlines with 22.2% Recreational Services with 19.2%.

2016 sector evolution



From the beginning of the year, the sector Airlines recorded a variation of -9.3%, while the group Travel & Leisure evolved by -2.1%. This industry group is made up of 6 sectors, in which the extreme variations were from -9.3% to 18.1%.

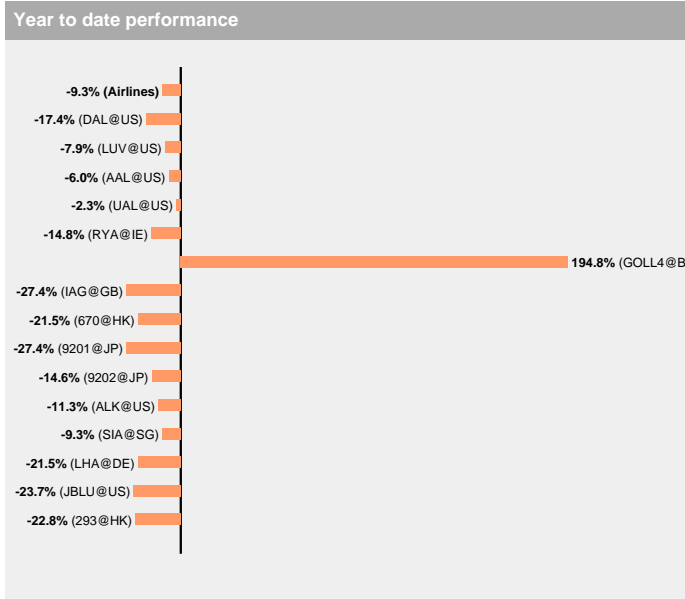


Airlines (WO)

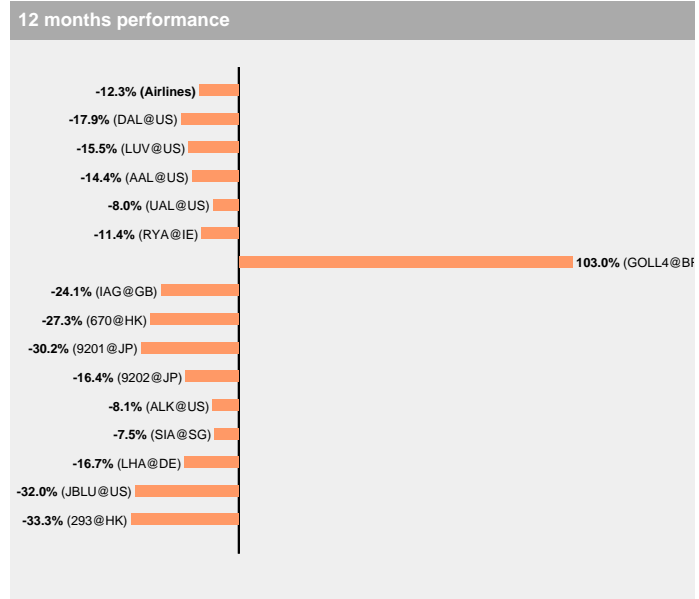
Closing price of November 1, 2016

	Market Value	Perf YtD	Nb of Stocks	Mkt Cap in \$bn	Stars	Risk Zone	G/PE Ratio	LT P/E	LT Growth	4wk Perf	% of Stocks in Uptrend
Airlines (WO)	245.77	-9.3%	49	300.17	★★★★		0.96	9.2	7.1%	4.3%	46.9%

The performance of the 20 largest stocks of the sector is presented below.

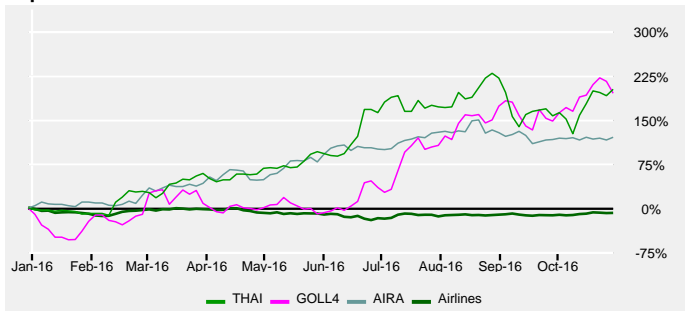


The analysis and details of the above stock can be found on page 6



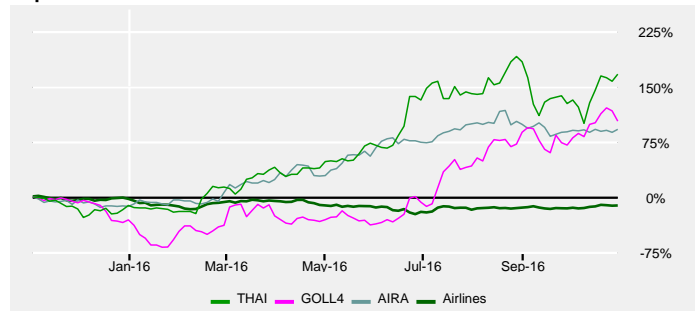
The analysis and details of the above stock can be found on page 6

Top Stocks 2016



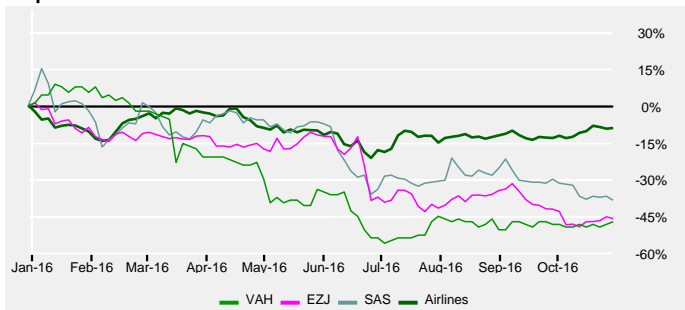
From the beginning of the year, the performance of the sector was -9.3%; as for the three best stocks, (THAI AIRWAYS INTL.PCL. (THAI), GOL LHAR.IG.SA (GOLL4) and AIRASIA BHD. (AIRA)), their performance was 201.6%, 194.8% and 120.2% respectively.

Top Stocks 12 months



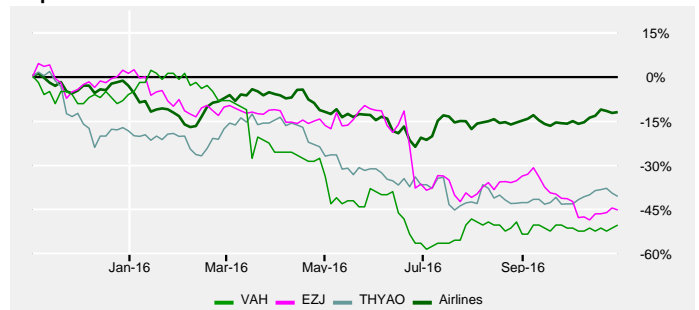
Since 12 months ago, the performance of the sector has been -12.3%; the three best stocks, (THAI AIRWAYS INTL.PCL. (THAI), GOL LHAR.IG.SA (GOLL4) and AIRASIA BHD. (AIRA)) recorded a performances of 166.8%, 103.0% and 91.9% respectively.

Flop Stocks 2016



VIRGIN AUS.HOLDINGS LTD. (VAH), EASYJET PLC. (EZJ) and SAS AB (SAS) with -47.3%, -46.0% and -38.5% recorded the three worst performances from the beginning of the year. For the sector Airlines, the variation was -9.3%.

Flop Stocks 12 months



The three worst performances in 12 months were recorded by VIRGIN AUS.HOLDINGS LTD. (VAH), EASYJET PLC. (EZJ) and TURK HAVA YOLLARI AO (THYAO) with -50.5%, -45.4% and -40.8%. As for the sector Airlines, it recorded a variation of -12.3%.

Only companies with a market capitalization exceeding \$500 million are mentioned.

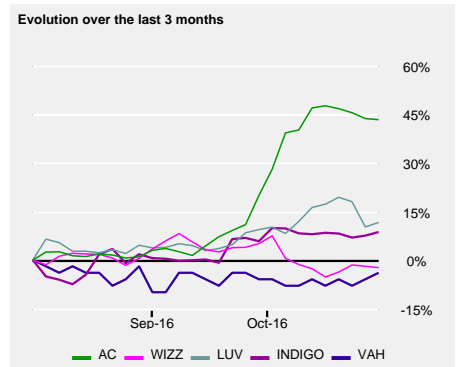


Airlines (WO)

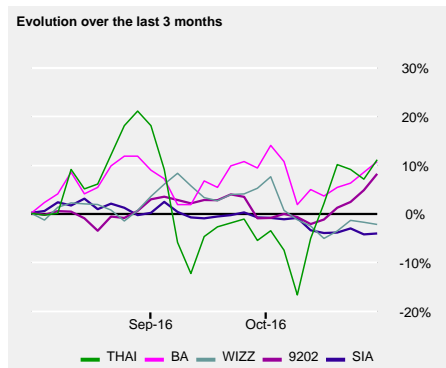
Closing price of November 1, 2016

Stocks with the best valuations

Symbol Market	Name Sector	Price Ccy	Mkt Cap in \$bn	7wk EPS Rev	Stars	Risk Zone	Global Evaluation
AC CA	AIR CANADA INCO. Airlines	12.67 CAD	2.58	34.1%	★★★★★	🟡	📈
WIZZ GB	WIZZ AIR HOLDINGS PLC. Airlines	1,524.00 GBP	1.07	20.1%	★★★★★	🟡	📈
LUV US	SOUTHWEST AIRLINES CO. Airlines	39.68 USD	24.43	19.2%	★★★★★	🟡	📈
INDIGO IN	INTERGLOBE AVIATION Airlines	940.20 INR	5.09	18.1%	★★★★★	🟡	📈
VAH AU	VIRGIN AUS.HOLDINGS LTD. Airlines	0.24 AUD	1.55	16.6%	★★★★★	🟡	📈



The global rating (Global Evaluation) is a multi-criteria approach that identifies the stocks with the best evaluations. This assessment is the compilation of fundamental (PE, growth, earnings revisions, dividend, etc.), technical (moving average, relative performance), and risk (behavior in declining markets and sensitivity to bad news) factors. In order to present the best selection, only companies with a market capitalization greater than \$1bn and showing good earnings growth valuations, are listed. Furthermore, the eligible stocks must have a minimum rating of two stars; a neutral to positive valuation; a weak to average risk zone; and a minimum correlation of 0.66. When the global rankings are identical, the analysts' 7 week earnings per share revision (7 wk EPS rev) acts as the deciding classification element.



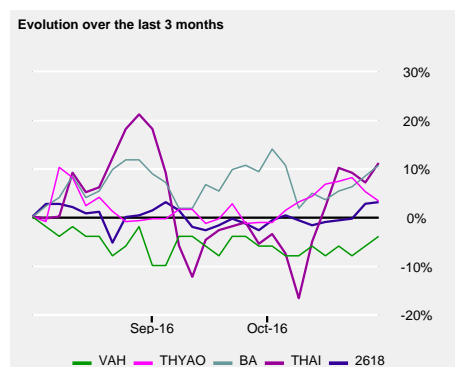
The best defensive stocks

Symbol Market	Name Sector	Price Ccy	Mkt Cap in \$bn	Bear Mkt Factor	Stars	Risk Zone	Global Evaluation
THAI TH	THAI AIRWAYS INTL.PCL. Airlines	27.75 THB	1.73	-104	★★★★★	🟡	📈
BA TH	BANGKOK AIRWAY Airlines	25.00 THB	1.50	-69	★★★★★	🟡	📈
WIZZ GB	WIZZ AIR HOLDINGS PLC. Airlines	1,524.00 GBP	1.07	-65	★★★★★	🟡	📈
9202 JP	ANA HOLDINGS INCO. Airlines	299.00 JPY	10.06	-58	★★★★★	🟡	📈
SIA SG	SINGAPORE AIRLINES LTD. Airlines	10.16 SGD	8.78	-44	★★★★★	🟡	📈

The risk evaluation is based on essentially two criteria: the stock's "behavior in declining markets" (Bear Market Factor), and the stock's "sensitivity to bad news" (Bad News Factor). By positioning a stock according to the world averages, three risk levels can be attributed (weak, average, high). Combining these elements makes it possible to create a final ranking of the best defensive stocks in the market. To present the best selection, only companies with a market capitalization greater than \$1bn and showing good earnings growth valuations are listed. Furthermore, the eligible stocks must have a minimum rating of two stars; a neutral to positive valuation; a weak to average risk zone. In case of a tie, the stock's "behavior in declining markets" will act as the deciding classification element.

The stocks with the lowest correlations

Symbol Market	Name Sector	Price Ccy	Mkt Cap in \$bn	Correlation	Stars	Risk Zone	Global Evaluation
VAH AU	VIRGIN AUS.HOLDINGS LTD. Airlines	0.24 AUD	1.55	0.05	★★★★★	🟡	📈
THYAO TR	TURK HAVA YOLLARI AO Airlines	5.37 TRY	2.38	0.27	★★★★★	🟡	📈
BA TH	BANGKOK AIRWAY Airlines	25.00 THB	1.50	0.28	★★★★★	🟡	📈
THAI TH	THAI AIRWAYS INTL.PCL. Airlines	27.75 THB	1.73	0.30	★★★★★	🟡	📈
2618 TW	EVA AIRWAYS CORP. Airlines	15.15 TWD	1.94	0.33	★★★★★	🟡	📈



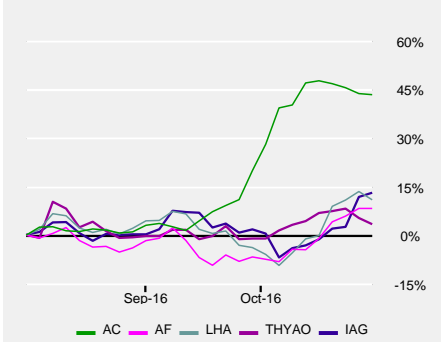
The correlation coefficient permits to identify the stocks of which the dependence on the market is the weakest. If this value is very low, less than 0.5, it signifies that less than 50% of the movements of the stock are explained by the movement of the market. On the contrary, a number close to 1 indicates that the value is very close to the evolutions of the market. In order to present the best selection, only the societies with a market capitalization higher than \$1bn and showing good earnings growth valuations are listed. Furthermore, the eligible stocks must have a minimum rating of two stars; a neutral to positive valuation; a weak to average risk zone; and a minimum correlation of 0.66. In the case of a tie in the ranking, the stock's "behavior in declining markets" (Bear Market Factor) acts as the deciding classification element.



Airlines (WO)

Closing price of November 1, 2016

Evolution over the last 3 months



The stocks with the weakest PE

Symbol Market	Name Sector	Price Ccy	Mkt Cap in \$bn	LT P/E	Stars	Risk Zone	Global Evaluation
AC CA	AIR CANADA INCO. Airlines	12.67 CAD	2.58	2.8	★★★★	Neutral	Low
AF FR	AIR FRANCE-KLM Airlines	5.55 EUR	1.84	4.2	★★★★	Neutral	Low
LHA DE	DEUTSCHE LUFTHANSA AG Airlines	11.44 EUR	5.92	5.0	★★★★	Neutral	Low
THYAO TR	TURK HAVA YOLLARI AO Airlines	5.37 TRY	2.38	5.1	★★★★	Neutral	Low
IAG GB	INTL.CON.S.AIRL.GROUP SA Airlines	443.10 GBp	11.48	6.3	★★★★	Neutral	Low

The price to earnings ratio (PE) helps to find undervalued stocks. It is commonly accepted that if the PE of a stock is lower than the PE of its reference market, the stock has upside price potential. In order to present the best selection, only companies with a market capitalization greater than \$1bn and showing good earnings growth valuations are listed. Furthermore, the eligible stocks must have: a minimum rating of two stars, a neutral to positive valuation, a risk zone weak to average. When the PE ratios are identical, the analysts' 7 week earnings per share revision (7 wk EPS rev) acts as the deciding classification element.

The 20 top stocks classified by market capitalization

Symbol Market	Name Sector	Price Ccy	Perf YtD	Mkt Cap in \$bn	G/PE Ratio	LT P/E	LT Growth	4wk Rel Perf	Div	Volatility 1M	Stars	Risk Zone	Global Evaluation
DAL US	DELTA AIR LINES INCO. Airlines	41.88 USD	-17.4%	31.36	0.93	7.8	5.5%	7.0%	1.8%	23.3%	★★★★	Neutral	Low
LUV US	SOUTHWEST AIRLINES CO. Airlines	39.68 USD	-7.8%	24.43	1.17	9.5	10.1%	2.1%	1.0%	34.9%	★★★★	Neutral	Low
AAL US	AMERICAN AIRL.INCO. Airlines	39.80 USD	-6.0%	20.62	0.47	8.0	2.6%	7.9%	1.1%	16.5%	★★★★	Neutral	Low
UAL US	UNITED CONT.HDG.INCO. Airlines	56.00 USD	-2.3%	17.77	-0.13	8.9	-1.1%	7.5%	0.0%	18.3%	★★★★	Neutral	Low
RYA IE	RYANAIR HOLDINGS PLC. Airlines	12.79 EUR	-14.8%	17.72	0.96	10.7	10.2%	7.2%	0.0%	33.6%	★★★★	Neutral	Low
601111 CN	AIR CHINA LTD. Airlines	7.43 CNY	-13.4%	12.33	0.99	10.8	9.3%	-1.3%	1.3%	20.6%	★★★★	Neutral	Low
GOLL4 BR	GOL LHAR.IG.SA Airlines	7.43 BRL	194.8%	12.03	-4.45	-28.7	-130.9%	10.1%	3.2%	50.7%	★★★★	Neutral	Low
IAG GB	INTL.CON.S.AIRL.GROUP SA Airlines	443.10 GBp	-27.4%	11.48	1.38	6.3	4.5%	13.9%	4.2%	45.8%	★★★★	Neutral	Low
600115 CN	CHINA ETN.AIRL.CORP.LTD. Airlines	6.36 CNY	-16.4%	11.29	0.56	14.1	7.2%	-1.5%	0.7%	23.6%	★★★★	Neutral	Low
670 HK	CHINA ETN.AIRL.CORP.LTD. Airlines	3.46 HKD	-21.5%	11.29	0.76	6.9	3.5%	-3.9%	1.7%	23.1%	★★★★	Neutral	Low
9201 JP	JAPAN AIRLINES CO.LTD. Airlines	3,162.00 JPY	-27.4%	10.97	0.83	7.1	2.2%	1.2%	3.7%	17.4%	★★★★	Neutral	Low
9202 JP	ANA HOLDINGS INCO. Airlines	299.00 JPY	-14.6%	10.06	1.32	10.6	11.9%	3.9%	2.2%	16.0%	★★★★	Neutral	Low
600029 CN	CHINA STHN.AIRL.CO.LTD. Airlines	7.18 CNY	-16.2%	9.01	0.79	11.6	7.8%	-1.4%	1.4%	14.2%	★★★★	Neutral	Low
ALK US	ALASKA AIR GROUP INCO. Airlines	71.43 USD	-11.3%	8.79	0.92	9.5	7.1%	8.8%	1.6%	24.6%	★★★★	Neutral	Low
SIA SG	SINGAPORE AIRLINES LTD. Airlines	10.16 SGD	-9.3%	8.78	0.62	18.5	8.0%	-1.3%	3.5%	11.2%	★★★★	Neutral	Low
LHA DE	DEUTSCHE LUFTHANSA AG Airlines	11.44 EUR	-21.5%	5.92	1.19	5.0	1.9%	17.6%	4.0%	39.8%	★★★★	Neutral	Low
JBLU US	JETBLUE AIRWAYS CORP. Airlines	17.28 USD	-23.7%	5.59	0.52	8.3	4.3%	0.1%	0.0%	30.4%	★★★★	Neutral	Low
293 HK	CATHAY PAC.AIRWAYS LTD. Airlines	10.36 HKD	-22.8%	5.26	6.91	11.8	79.4%	-2.8%	2.0%	28.5%	★★★★	Neutral	Low
601021 CN	SPRING AIRLINES CTD. Airlines	43.39 CNY	-28.9%	5.12	1.23	15.2	17.8%	-7.9%	0.8%	14.5%	★★★★	Neutral	Low
INDIGO IN	INTERGLOBE AVIATION Airlines	940.20 INR	-21.2%	5.09	1.42	12.6	14.4%	0.8%	3.5%	8.4%	★★★★	Neutral	Low

Number of Stocks

The number of stocks in the index that can be analyzed.

Mkt Cap in \$bn

This number represents the Market Capitalization in USD bn. It is calculated by multiplying a firm's share price by the number of outstanding shares. For reasons of comparison, all results are in USD.

Valuation Rating

Our Valuation Rating indicates if a stock is "expensive" or "cheap" relative to its growth potential. This is used to determine whether or not the investor is paying a premium for anticipated growth.

To estimate a stock's value relative to its current price, our Valuation Rating combines:

- stock price
- projected earnings
- projected earnings growth
- dividends

We establish our rating by combining these elements.

There are five ratings, ranging from strongly undervalued 🟢🟢 to strongly overvalued 🟡🔴.

Stars

theScreener.com's star rating system is designed to enable you to identify high-quality stocks quickly and easily.

In this easy-to-use rating system, stars are earned for each element specified below:

- Earnings Rev Trend 🟢 = ★★★★★
- Valuation Rating 🟢, 🟢🟢 = ★★★★★
- MT Tech Trend 🟢 = ★★★★★
- 4 week Relative Performance > 1% = ★★★★★

Therefore, a stock can earn a maximum of four stars.

The lowest rating a stock can have is no stars.

Once a stock has earned a star, it will keep it until:

- Earnings Rev Trend becomes negative 🟡
- Valuation Rating becomes negative 🟡, 🟡🔴
- MT Tech Trend becomes negative 🟡
- 4 week Relative Performance drops below -1% (<-1%)

Div

This is the dividend in % for the next 12 months.

Even if the same number is shown, the dividend value can appear in one of four colors, depending on the earnings coverage:

- 0%, no dividend
- 4%, the dividends are covered (between 0% and 40% of earnings)
- 4%, the dividends represent between 40% and 70% of earnings
- 4%, the dividends are higher than 70% of earnings, which implies that the dividend coverage is not guaranteed.

Earnings Rev. Trend

The symbol 🟢 shows that compared with their earnings revisions of seven weeks ago, the analysts have now raised their estimates (7wk EPS Rev; > 1%); the symbol 🟡 indicates that compared with their earnings revisions of seven weeks ago, the analysts have now lowered their estimates (7wk EPS Rev < -1%).

When the earnings revisions (7wk EPS Rev) fall between +1% and -1%, the trend is considered to be neutral 🟢.

The symbol 🟢 indicates that the last significant revisions have been trending positive.

The symbol 🟡 indicates that the last significant revisions have been negative.

7wk EPS Rev

This is an abbreviation for 7 week Earnings Per Share Revision. This column indicates the value of these revised earnings. A figure of 2.8 signifies that compared with seven weeks ago, the analysts have now revised and raised their estimates by 2.8%. On the contrary, a negative number means that the earnings would have been revised lower.

G/PE Ratio

In order to establish our Valuation Rating, we calculate the estimated growth of future earnings (LT Growth) plus dividend in %, divided by the estimated future PE ratio (Long Term P/E).

LT PE

This is the relationship between the price (P) and the estimated long-term future earnings (E LT).

LT Growth

This is the estimated annual growth rate of future earnings, normally projected over the next two to three years.

MT Tech Trend

The MT Tech Trend indicates the current trend, positive 🟢 or negative 🟡, and the Tech Reverse indicates up to which price this trend will remain valid.

When a price falls to 1.75% above or below the Tech Reverse, the MT Tech Trend is considered neutral 🟢.

Once the price breaks out of the +1.75% neutral zone, the MT Tech Trend will change to positive.

The symbol 🟢 indicates that the previous MT Tech Trend was positive.

The symbol 🟡 indicates that the previous MT Tech Trend was negative.

4wk (Rel) Perf.

This figure measures the performance of a stock relative to its national or regional index (compared to four weeks ago). As for an Index, it measures the net performance over 4 weeks.

Bad News Factor

To determine the "Bad News Factor" we analyze a stock's declines in rising markets. In this purely objective analysis, the actual reasons for a stock's behavior are not important. If a stock price falls while its relative index goes up, it can be assumed that the stock's performance has been affected by bad news - hence the name, "Bad News Factor".

Here a stock's movements are measured on a bi-weekly basis, during a sliding 52 week period. Every time a stock drops while its reference index rises, the difference is calculated in %, integrated into a yearly average and expressed in basis points.

The higher the "Bad News Factor," the more a stock has proven to be sensitive to bad news. The lower the "Bad News Factor," the less the stock has proven to be sensitive to bad news.

Bear Market Factor

To determine the "Bear Market Factor" we analyze a stock's price movements in declining markets.

This is the analysis of the movements, in a bi-weekly intervals, during a sliding 52 week period.

The higher the "Bear Market Factor," the greater the probability a stock would drop when its relative index drops.

A "Bear Market Factor" that is strongly negative means the stock has been more resistant to losses in declining markets.

Risk Zone

The price developments of stocks are generally volatile and contain high risks that can result in a total loss. Based on a their historical behavior, stocks are classified by risk levels. These risk levels have to be considered solely in relative historic comparison to other stocks. Please note that even "Low Risk" stocks are equities and therefore high risk investments that can lose up to all of their value, and that based on the past no firm conclusions can be taken into the future.

Risk zones are determined by measuring the "Bear Market Factor" and the "Bad News Factor" against a world reference.

There are three types of risk ratings:

- Low Risk: The risk indicators fall below the world reference average.
- Medium Risk: The risk indicators are situated higher than the world reference average, but lower than one standard deviation.
- High Risk: The risk indicators are at levels higher than one standard deviation.

Volatility 12 M

Volatility is also used as a risk factor. It measures the magnitude of the high and low movements of a stock or index. The higher the volatility, the more risky a stock is considered to be.

% of Stocks in Uptrend

This is the percentage of stocks in a given list that have a positive Medium Term Technical Trend. If, for example, the aggregate of Technology / World, (which is made up of 458 stocks) has 8% "of stocks in Uptrend," it means that 38 of the stocks within that aggregate have a positive Medium Term Technical Trend.

Beta

Beta is often used as a measure of risk. Where a Beta is greater than 100, the stock is more volatile than its reference index and therefore more risky.

Correlation

Correlation is the degree of similarity (in %) in which a stock fluctuates in relation to its reference index.

Disclaimer:

This report is provided for your personal information only, and does not constitute or contain any solicitation, financial advice, or offer to buy or sell any kind of securities. This report was based on sources that we consider reliable, but we do not warrant the accuracy and exhaustiveness of the information, opinions and quotes provided. Past performance is no guarantee of future results. More information: www.thescreener.com/en/wc/methodology.htm
Earnings forecasts provided by THOMSON REUTERS.