

SECTOR

Distillers & Vintners

Analysis and Synthesis - World



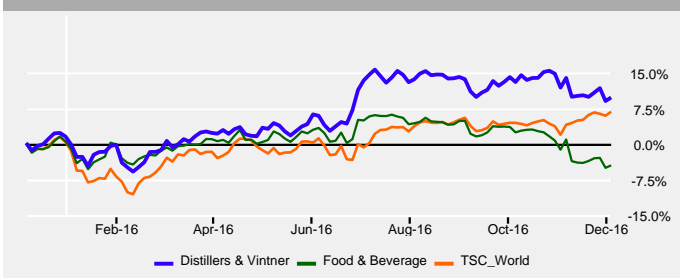
December 6, **2016**



Distillers & Vintners (WO)

Closing price of December 6, 2016

Comparison [December 8, 2015 - December 6, 2016]



The sector Distillers & Vintners represents approximately 10% of the market capitalization of the group Food & Beverage and less than 1% of the World market with 30 companies being followed regularly by the analysts.

The sector Distillers & Vintners is currently trading 5% below its 52 week high and 17% above its 52 week low (bi-weekly closing).

Performance since December 8, 2015: 9.6% vs. -4.6% for the group Food & Beverage and 6.7% for the TSC_World.

The current % of stocks over their Medium Term technical trend (MTT) is 26.7%.

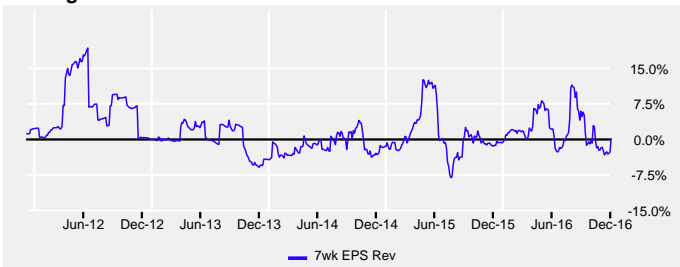
	Market Value	Perf YtD	Nb of Stocks	Mkt Cap in \$bn	Stars	Risk Zone	G/PE Ratio	LT P/E	LT Growth	4wk Perf	% of Stocks in Uptrend
Distillers & Vintners (WO)	199.68	8.1%	30	281.83	★★★★★		1.00	17.1	14.7%	-6.3%	26.7%
Food & Beverage (WO)	164.62	-5.0%	271	2,641.72	★★★★★		1.08	16.8	15.4%	-8.0%	30.6%
TSC_World (WO)	247.52	6.4%	6,388	59,170.99	★★★★★		1.18	15.2	17.8%	2.7%	45.8%

Price evaluation rating

In order to assess whether an index is correctly valued, we focus on Peter Lynch's broadly accepted methodology of comparing the projected earnings growth and dividend with the estimated PE ratio.

Based on this approach, we feel this sector is currently slightly undervalued. A "Forecasted Growth + Estimated Dividend Yield/ Estimated Price Earnings" ratio higher than 0.9 indicates that the index's price includes a discount to growth of -9.7%.

Earnings revision trend



Compared to seven weeks ago, the analysts have not significantly revised their earnings estimates (changes between +1% and -1% are considered neutral). But the underlying trend has been negative since October 21, 2016 at a price of 207.2.

"Price to Estimated Earnings" (PE) - Evolution over five years



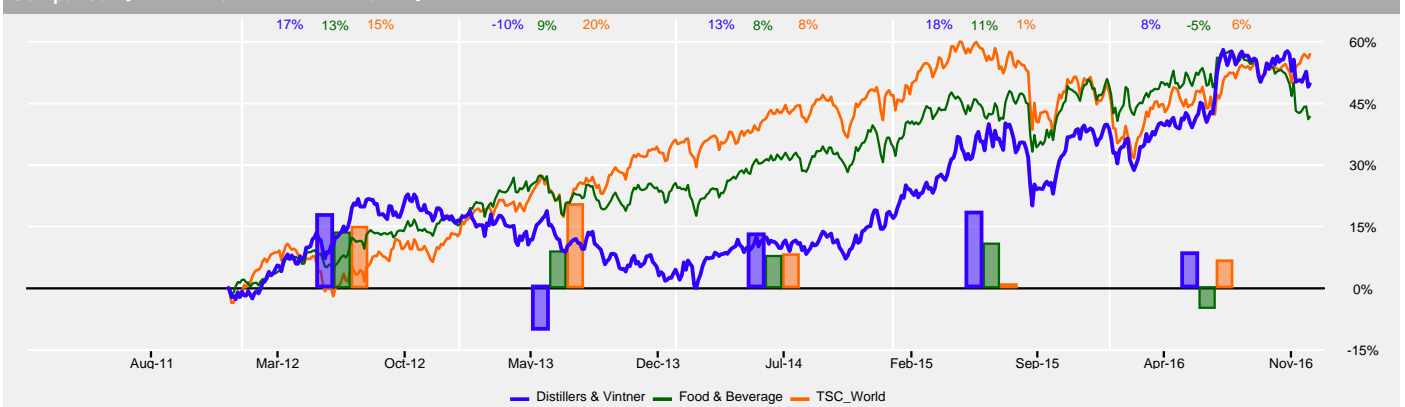
The estimated PE is calculated on the basis of the underlying stocks. While the PE of the sector Distillers & Vintners is 17.1, the PE of its group (Food & Beverage) is at the same level (16.8). Historically speaking, this sector is currently trading significantly higher than its median of 14.5.

Technical trend

The index is currently at a level close to its 40-day moving average. Prior to this (since September 13, 2016), the index traded below its moving average. The confirmed Technical Reverse (Tech Reverse + 1.75%) point is currently 3% higher.

Close to its average, the sector indicates a phase of indecision regarding its trend. On the other hand, with 26.7% of stocks trending positive, it would appear there is a certain weakness in the market that isn't being confirmed by the sector.

Comparison [December 7, 2011 - December 6, 2016]



Performance over 5 years

On a 5 year moving average, the performance of the sector Distillers & Vintners is 49.6%, vs. 41.7% for the group Food & Beverage and 56.9% for the TSC_World. During this period, the high of 210.4 was reached on July 2016 and the low of 129.3 in the month of December 2011.

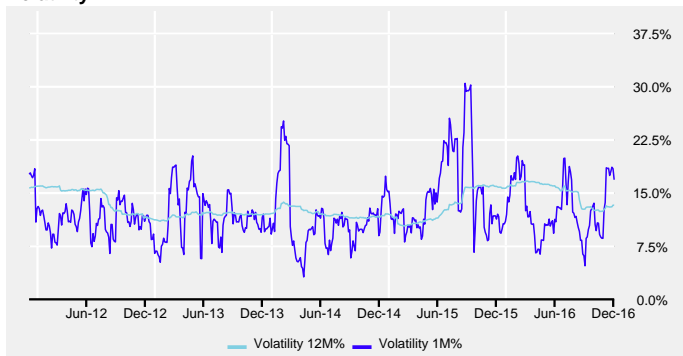


Distillers & Vintners (WO)

Closing price of December 6, 2016

	Market Value	Perf YtD	Nb of Stocks	Mkt Cap in \$bn	Stars	Risk Zone	G/PE Ratio	LT P/E	LT Growth	4wk Perf	% of Stocks in Uptrend
Distillers & Vintners (WO)	199.68	8.1%	30	281.83	★★★★★		1.00	17.1	14.7%	-6.3%	26.7%

Volatility



The volatility is also used as a risk factor. It measures the magnitude of the high and low movements of a stock or index. The more the volatility is high, the more risky a sector is considered to be.

As of the last update, the monthly volatility of (16.8%) is higher than the last few years' average of (12.3%). The high magnitude of short term price fluctuations indicates the market is very nervous.

On the other hand, long term volatility 13.2% of the sector is similar to that of the group Food & Beverage (12.4%), reflecting almost identical price variations between the sector and the group to which it belongs.

The risk factor in declining markets

The "Bear Market Factor" measures the behavior of a sector in declining markets. In this context, the sector Distillers & Vintners has a tendency to minimize the drops of the index TSC_World.

This would indicate a defensive behavior during market corrections. The sector Distillers & Vintners has a tendency to minimize dips in the index by -0.59%.

The risk factor in rising markets

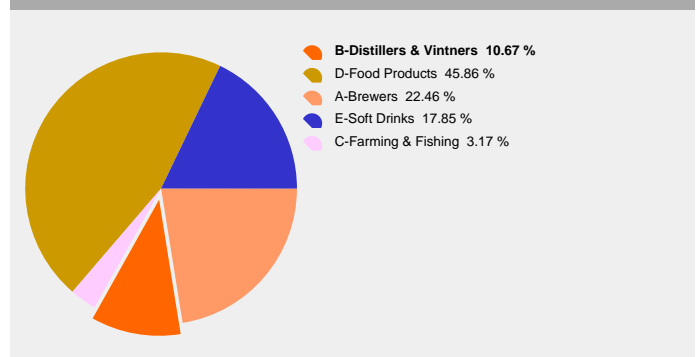
The "Bad News Factor" measures a sector's corrections in a rising market phase.

In this configuration, the market slightly sanctions the sector Distillers & Vintners when there is specific pressure in this particular economic activity. When the sector declines in a rising market its average deviation is -1.35%.

Risk analysis summary

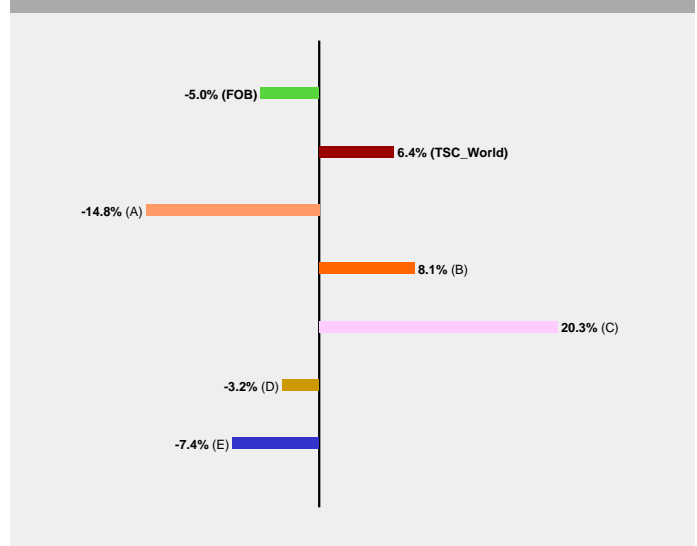
Generally speaking, the risk the investor takes on with the sector Distillers & Vintners can be considered weak in light of two factors, Bear Market and Bad News, both of which indicate only a slight risk.

Allocation by sector, of the group Food & Beverage



The largest sector in terms of market capitalization Food Products represents 45.9% of the group Food & Beverage. These sectors follow, in size order, Brewers with 22.5% Soft Drinks with 17.8%.

2016 sector evolution



From the beginning of the year, the sector Distillers & Vintners recorded a variation of 8.1%, while the group Food & Beverage evolved by -5.0%. This industry group is made up of 5 sectors, in which the extreme variations were from -14.8% to 20.3%.

Checklist (Distillers & Vintners)

Stars	★★★★★	Very weak interest since November 11, 2016.
Earnings Rev Trend	★	Analysts neutral but previously negative (since October 21, 2016)
Valuation Rating	★	Moderately undervalued
MT Tech Trend	★	Market neutral but previously negative (since September 13, 2016)
4wk Rel Perf	★	Under pressure (vs. TSC_World)
Risk Zone		Low, no change over 1 year.
Bear Mkt Factor		Very defensive positioning during market declines
Bad News Factor		Slight market sanction in case of specific pressure

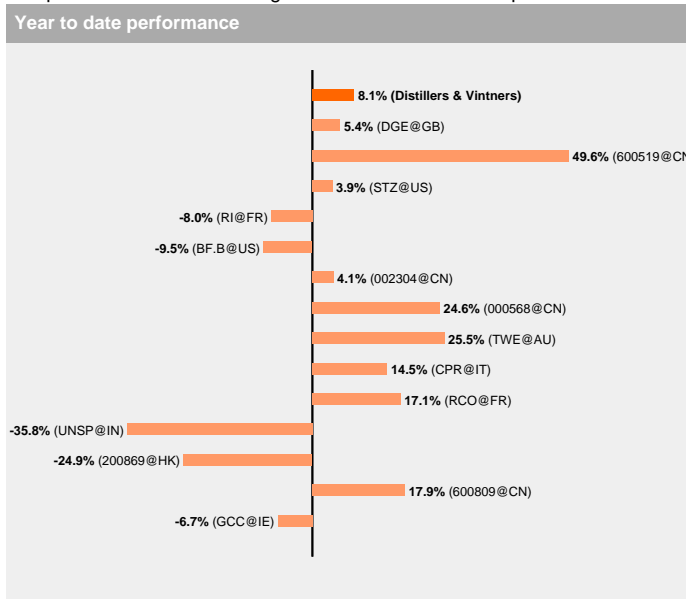


Distillers & Vintners (WO)

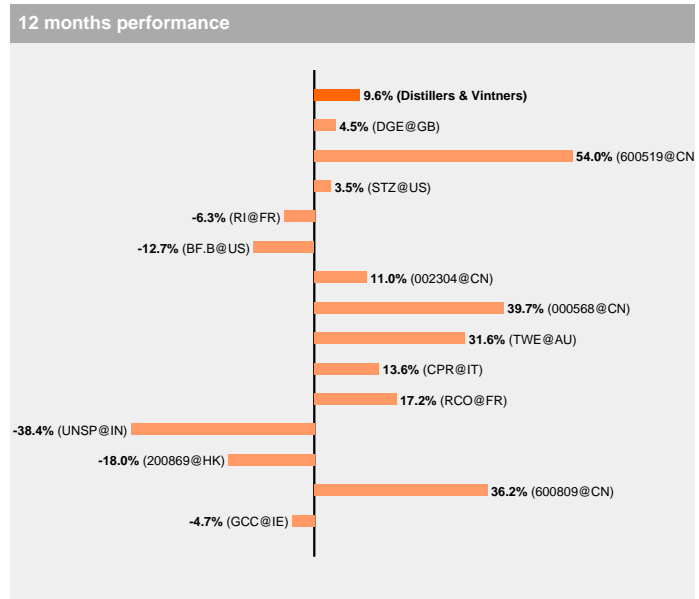
Closing price of December 6, 2016

	Market Value	Perf YtD	Nb of Stocks	Mkt Cap in \$bn	Stars	Risk Zone	G/PE Ratio	LT P/E	LT Growth	4wk Perf	% of Stocks in Uptrend
Distillers & Vintners (WO)	199.68	8.1%	30	281.83	★★★★		1.00	17.1	14.7%	-6.3%	26.7%

The performance of the 20 largest stocks of the sector is presented below.

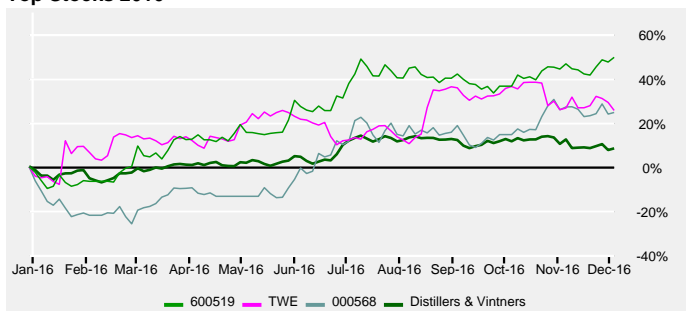


The analysis and details of the above stock can be found on page 6



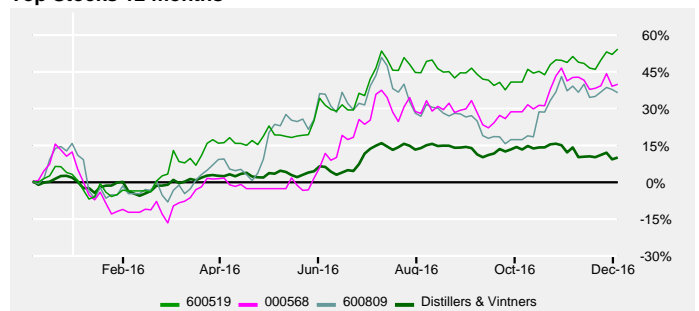
The analysis and details of the above stock can be found on page 6

Top Stocks 2016



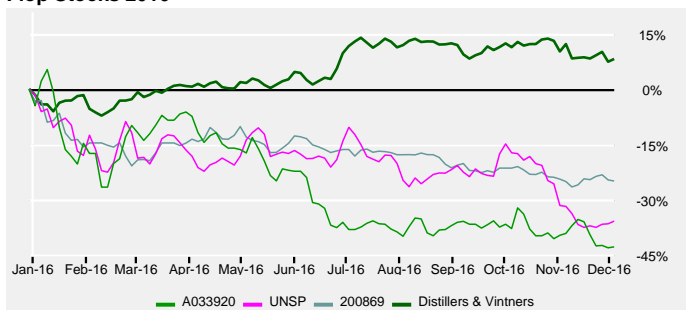
From the beginning of the year, the performance of the sector was 8.1%; as for the three best stocks, (KWEICHOW MOUTAI CO.LTD. (600519), TREASURY WINE ESTS.LTD. (TWE) and LUZHOU LAO JIAO CO.LTD. (000568)), their performance was 49.6%, 25.5% and 24.6% respectively.

Top Stocks 12 months



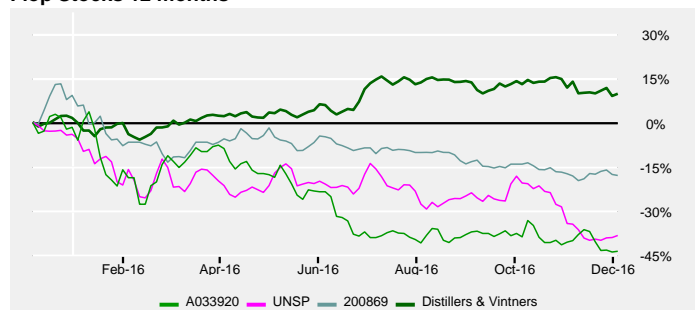
Since 12 months ago, the performance of the sector has been 9.6%; the three best stocks, (KWEICHOW MOUTAI CO.LTD. (600519), LUZHOU LAO JIAO CO.LTD. (000568) and SHANXI XIC.FEN WINE FAC. (600809)) recorded a performances of 54.0%, 39.7% and 36.2% respectively.

Flop Stocks 2016



MUHAK COMPANY LTD. (A033920), UNITED SPIRITS LTD. (UNSP) and YANTAI CHANGYU PION.WINE (200869) with -42.8%, -35.8% and -24.9% recorded the three worst performances from the beginning of the year. For the sector Distillers & Vintners, the variation was 8.1%.

Flop Stocks 12 months



The three worst performances in 12 months were recorded by MUHAK COMPANY LTD. (A033920), UNITED SPIRITS LTD. (UNSP) and YANTAI CHANGYU PION.WINE (200869) with -43.7%, -38.4% and -18.0%. As for the sector Distillers & Vintners, it recorded a variation of 9.6%.

Only companies with a market capitalization exceeding \$500 million are mentioned.



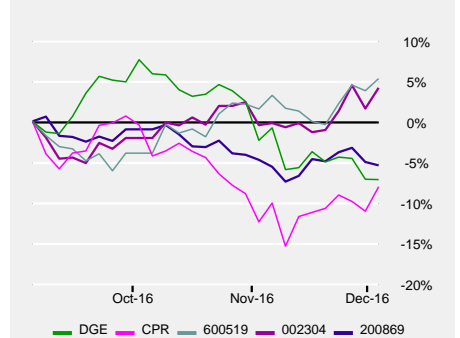
Distillers & Vintners (WO)

Closing price of December 6, 2016

Stocks with the best valuations

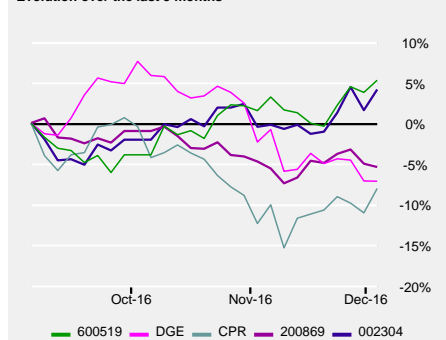
Symbol Market	Name Sector	Price Ccy	Mkt Cap in \$bn	7wk EPS Rev	Stars	Risk Zone	Global Evaluation
DGE GB	DIAGEO PLC. Distillers & Vintners	1,956.50 GBP	62.57	1.6%	★★★★	🟡	📈
CPR IT	DAVIDE CAMPARI MILANO Distillers & Vintners	9.16 EUR	5.71	0.6%	★★★★	🟡	📈
600519 CN	KWEICHOW MOUTAI CO.LTD. Distillers & Vintners	326.42 CNY	59.63	0.2%	★★★★	🟡	📈
002304 CN	JIG.YANGHE BREW.JST.CTD. Distillers & Vintners	71.33 CNY	15.63	-1.1%	★★★★	🟡	📈
200869 HK	YANTAI CHANGYU PION.WINE Distillers & Vintners	21.09 HKD	3.16	-15.2%	★★★★	🟡	📈

Evolution over the last 3 months



The global rating (Global Evaluation) is a multi-criteria approach that identifies the stocks with the best evaluations. This assessment is the compilation of fundamental (PE, growth, earnings revisions, dividend, etc.), technical (moving average, relative performance), and risk (behavior in declining markets and sensitivity to bad news) factors. In order to present the best selection, only companies with a market capitalization greater than \$1bn and showing good earnings growth valuations, are listed. Furthermore, the eligible stocks must have a minimum rating of two stars; a neutral to positive valuation; a weak to average risk zone; and a minimum correlation of 0.66. When the global rankings are identical, the analysts' 7 week earnings per share revision (7 wk EPS rev) acts as the deciding classification element.

Evolution over the last 3 months



The best defensive stocks

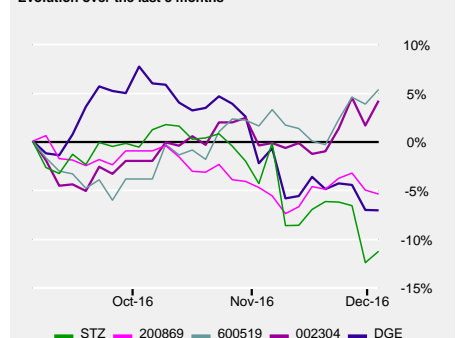
Symbol Market	Name Sector	Price Ccy	Mkt Cap in \$bn	Bear Mkt Factor	Stars	Risk Zone	Global Evaluation
600519 CN	KWEICHOW MOUTAI CO.LTD. Distillers & Vintners	326.42 CNY	59.63	-108	★★★★	🟡	📈
DGE GB	DIAGEO PLC. Distillers & Vintners	1,956.50 GBP	62.57	-90	★★★★	🟡	📈
CPR IT	DAVIDE CAMPARI MILANO Distillers & Vintners	9.16 EUR	5.71	-62	★★★★	🟡	📈
200869 HK	YANTAI CHANGYU PION.WINE Distillers & Vintners	21.09 HKD	3.16	-59	★★★★	🟡	📈
002304 CN	JIG.YANGHE BREW.JST.CTD. Distillers & Vintners	71.33 CNY	15.63	-52	★★★★	🟡	📈

The risk evaluation is based on essentially two criteria: the stock's "behavior in declining markets" (Bear Market Factor), and the stock's "sensitivity to bad news" (Bad News Factor). By positioning a stock according to the world averages, three risk levels can be attributed (weak, average, high). Combining these elements makes it possible to create a final ranking of the best defensive stocks in the market. To present the best selection, only companies with a market capitalization greater than \$1bn and showing good earnings growth valuations are listed. Furthermore, the eligible stocks must have a minimum rating of two stars; a neutral to positive valuation; a weak to average risk zone. In case of a tie, the stock's "behavior in declining markets" will act as the deciding classification element.

The stocks with the lowest correlations

Symbol Market	Name Sector	Price Ccy	Mkt Cap in \$bn	Correlation	Stars	Risk Zone	Global Evaluation
STZ US	CONSTELLATION BNS.INCO. Distillers & Vintners	147.98 USD	29.68	0.37	★★★★	🟡	📈
200869 HK	YANTAI CHANGYU PION.WINE Distillers & Vintners	21.09 HKD	3.16	0.43	★★★★	🟡	📈
600519 CN	KWEICHOW MOUTAI CO.LTD. Distillers & Vintners	326.42 CNY	59.63	0.47	★★★★	🟡	📈
002304 CN	JIG.YANGHE BREW.JST.CTD. Distillers & Vintners	71.33 CNY	15.63	0.48	★★★★	🟡	📈
DGE GB	DIAGEO PLC. Distillers & Vintners	1,956.50 GBP	62.57	0.50	★★★★	🟡	📈

Evolution over the last 3 months



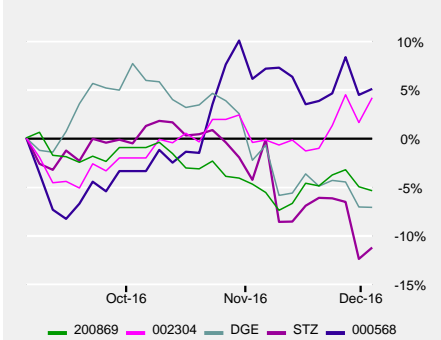
The correlation coefficient permits to identify the stocks of which the dependence on the market is the weakest. If this value is very low, less than 0.5, it signifies that less than 50% of the movements of the stock are explained by the movement of the market. On the contrary, a number close to 1 indicates that the value is very close to the evolutions of the market. In order to present the best selection, only the societies with a market capitalization higher than \$1bn and showing good earnings growth valuations are listed. Furthermore, the eligible stocks must have a minimum rating of two stars; a neutral to positive valuation; a weak to average risk zone; and a minimum correlation of 0.66. In the case of a tie in the ranking, the stock's "behavior in declining markets" (Bear Market Factor) acts as the deciding classification element.



Distillers & Vintners (WO)

Closing price of December 6, 2016

Evolution over the last 3 months



The stocks with the weakest PE

Symbol Market	Name Sector	Price Ccy	Mkt Cap in \$bn	LT P/E	Stars	Risk Zone	Global Evaluation
200869 HK	YANTAI CHANGYU PION.WINE Distillers & Vintners	21.09 HKD	3.16	12.5	★★★★	Neutral	Strong
002304 CN	JIG.YANGHE BREW.JST.CTD. Distillers & Vintners	71.33 CNY	15.63	14.3	★★★★	Neutral	Strong
DGE GB	DIAGEO PLC. Distillers & Vintners	1,956.50 GBp	62.57	16.0	★★★★	Neutral	Strong
STZ US	CONSTELLATION BNS.INCO. Distillers & Vintners	147.98 USD	29.68	17.3	★★★★	Weak	Weak
000568 CN	LUZHOU LAO JIAO CO.LTD. Distillers & Vintners	33.80 CNY	6.89	17.8	★★★★	Weak	Weak

The price to earnings ratio (PE) helps to find undervalued stocks. It is commonly accepted that if the PE of a stock is lower than the PE of its reference market, the stock has upside price potential. In order to present the best selection, only companies with a market capitalization greater than \$1bn and showing good earnings growth valuations are listed. Furthermore, the eligible stocks must have: a minimum rating of two stars, a neutral to positive valuation, a risk zone weak to average. When the PE ratios are identical, the analysts' 7 week earnings per share revision (7 wk EPS rev) acts as the deciding classification element.

The 20 top stocks classified by market capitalization

Symbol Market	Name Sector	Price Ccy	Perf YtD	Mkt Cap in \$bn	G/PE Ratio	LT P/E	LT Growth	4wk Rel Perf	Div	Volatility 1M	Stars	Risk Zone	Global Evaluation
DGE GB	DIAGEO PLC. Distillers & Vintners	1,956.50 GBp	5.4%	62.57	1.03	16.0	13.2%	-9.8%	3.3%	23.4%	★★★★	Neutral	Strong
600519 CN	KWEICHOW MOUTAI CO.LTD. Distillers & Vintners	326.42 CNY	49.6%	59.63	1.01	17.8	15.7%	1.3%	2.3%	16.3%	★★★★	Neutral	Strong
STZ US	CONSTELLATION BNS.INCO. Distillers & Vintners	147.98 USD	3.9%	29.68	0.98	17.3	15.7%	-13.4%	1.2%	40.3%	★★★★	Weak	Weak
RI FR	PERNOD-RICARD Distillers & Vintners	97.62 EUR	-7.9%	27.81	0.89	15.2	11.4%	-11.4%	2.1%	22.2%	★★★★	Neutral	Weak
000858 CN	WULIANGYE YIBIN CO.LTD. Distillers & Vintners	36.17 CNY	32.6%	19.97	1.13	15.1	14.4%	3.1%	2.6%	21.6%	★★★★	Neutral	Strong
BF.B US	BROWN-FORMAN CORP. Distillers & Vintners	44.95 USD	-9.4%	18.09	0.76	21.7	14.9%	-8.4%	1.6%	21.6%	★★★★	Weak	Weak
002304 CN	JIG.YANGHE BREW.JST.CTD. Distillers & Vintners	71.33 CNY	4.1%	15.63	1.20	14.3	14.3%	2.2%	2.9%	20.6%	★★★★	Neutral	Strong
000568 CN	LUZHOU LAO JIAO CO.LTD. Distillers & Vintners	33.80 CNY	24.6%	6.89	1.21	17.8	19.0%	-3.4%	2.6%	22.5%	★★★★	Weak	Weak
TWE AU	TREASURY WINE ESTS.LTD. Distillers & Vintners	10.42 AUD	25.5%	5.74	1.09	20.0	19.1%	-5.4%	2.6%	29.5%	★★★★	Weak	Weak
CPR IT	DAVIDE CAMPARI MILANO Distillers & Vintners	9.16 EUR	14.5%	5.71	0.98	19.4	17.9%	0.1%	1.1%	32.8%	★★★★	Neutral	Strong
RCO FR	REMY COINTREAU Distillers & Vintners	78.16 EUR	17.1%	4.17	0.89	23.4	18.5%	4.7%	2.3%	28.2%	★★★★	Weak	Weak
UNSP IN	UNITED SPIRITS LTD. Distillers & Vintners	1,920.50 INR	-35.8%	4.11	0.94	39.2	36.8%	-3.0%	0.2%	21.3%	★★★★	Weak	Weak
200869 HK	YANTAI CHANGYU PION.WINE Distillers & Vintners	21.09 HKD	-24.9%	3.16	0.96	12.5	9.1%	-0.9%	2.9%	14.7%	★★★★	Neutral	Strong
608589 CN	ANHUI KOUZI DSTL.CTD. Distillers & Vintners	33.19 CNY	-22.7%	2.90	1.18	16.7	17.9%	-4.8%	1.8%	24.5%	★★★★	Weak	Weak
600809 CN	SHANXI XIC.FEN WINE FAC. Distillers & Vintners	22.72 CNY	17.9%	2.86	0.90	23.4	19.3%	-3.0%	1.6%	20.8%	★★★★	Weak	Weak
603369 CN	JIG.KINGS LUCK BRJST. Distillers & Vintners	13.30 CNY	-0.8%	2.43	0.81	18.5	13.4%	-1.3%	1.5%	16.1%	★★★★	Weak	Weak
600559 CN	HEBEI HGI.LBN.LIQUOR CTD Distillers & Vintners	23.40 CNY	-2.8%	1.49	1.26	35.5	43.2%	-9.0%	1.5%	29.8%	★★★★	Weak	Weak
600779 CN	SICHUAN SWELLFUN CO.LTD. Distillers & Vintners	17.09 CNY	35.0%	1.21	1.13	25.3	27.7%	-2.2%	0.8%	21.2%	★★★★	Weak	Weak
600059 CN	ZHEJIANG GUYUE Distillers & Vintners	10.03 CNY	-8.7%	1.18	0.65	34.9	21.9%	-3.5%	0.8%	14.4%	★★★★	Weak	Weak
GCC IE	C&C GROUP PLC. Distillers & Vintners	3.46 EUR	-6.7%	1.17	0.88	13.7	7.9%	-3.5%	4.2%	17.1%	★★★★	Neutral	Strong

Number of Stocks

The number of stocks in the index that can be analyzed.

Mkt Cap in \$bn

This number represents the Market Capitalization in USD bn. It is calculated by multiplying a firm's share price by the number of outstanding shares. For reasons of comparison, all results are in USD.

Valuation Rating

Our Valuation Rating indicates if a stock is "expensive" or "cheap" relative to its growth potential. This is used to determine whether or not the investor is paying a premium for anticipated growth.

To estimate a stock's value relative to its current price, our Valuation Rating combines:

- stock price
- projected earnings
- projected earnings growth
- dividends

We establish our rating by combining these elements.

There are five ratings, ranging from strongly undervalued 🟢🟢 to strongly overvalued 🟡🔴.

Stars

theScreener.com's star rating system is designed to enable you to identify high-quality stocks quickly and easily.

In this easy-to-use rating system, stars are earned for each element specified below:

- Earnings Rev Trend 🟢 = ★★★★★
- Valuation Rating 🟢, 🟢🟢, 🟢🟢🟢 = ★★★★★
- MT Tech Trend 🟢 = ★★★★★
- 4 week Relative Performance > 1% = ★★★★★

Therefore, a stock can earn a maximum of four stars.

The lowest rating a stock can have is no stars.

Once a stock has earned a star, it will keep it until:

- Earnings Rev Trend becomes negative 🟡
- Valuation Rating becomes negative 🟡, 🟡🔴, 🟡🔴🔴
- MT Tech Trend becomes negative 🟡
- 4 week Relative Performance drops below -1% (<-1%)

Div

This is the dividend in % for the next 12 months.

Even if the same number is shown, the dividend value can appear in one of four colors, depending on the earnings coverage:

- 0%, no dividend
- 4%, the dividends are covered (between 0% and 40% of earnings)
- 4%, the dividends represent between 40% and 70% of earnings
- 4%, the dividends are higher than 70% of earnings, which implies that the dividend coverage is not guaranteed.

Earnings Rev. Trend

The symbol 🟢 shows that compared with their earnings revisions of seven weeks ago, the analysts have now raised their estimates (7wk EPS Rev; > 1%); the symbol 🟡 indicates that compared with their earnings revisions of seven weeks ago, the analysts have now lowered their estimates (7wk EPS Rev < -1%).

When the earnings revisions (7wk EPS Rev) fall between +1% and -1%, the trend is considered to be neutral 🟢.

The symbol 🟢 indicates that the last significant revisions have been trending positive.

The symbol 🟡 indicates that the last significant revisions have been negative.

7wk EPS Rev

This is an abbreviation for 7 week Earnings Per Share Revision. This column indicates the value of these revised earnings. A figure of 2.8 signifies that compared with seven weeks ago, the analysts have now revised and raised their estimates by 2.8%. On the contrary, a negative number means that the earnings would have been revised lower.

G/PE Ratio

In order to establish our Valuation Rating, we calculate the estimated growth of future earnings (LT Growth) plus dividend in %, divided by the estimated future PE ratio (Long Term P/E).

LT PE

This is the relationship between the price (P) and the estimated long-term future earnings (E LT).

LT Growth

This is the estimated annual growth rate of future earnings, normally projected over the next two to three years.

MT Tech Trend

The MT Tech Trend indicates the current trend, positive 🟢 or negative 🟡, and the Tech Reverse indicates up to which price this trend will remain valid.

When a price falls to 1.75% above or below the Tech Reverse, the MT Tech Trend is considered neutral 🟢.

Once the price breaks out of the +1.75% neutral zone, the MT Tech Trend will change to positive.

The symbol 🟢 indicates that the previous MT Tech Trend was positive.

The symbol 🟡 indicates that the previous MT Tech Trend was negative.

4wk (Rel) Perf.

This figure measures the performance of a stock relative to its national or regional index (compared to four weeks ago). As for an Index, it measures the net performance over 4 weeks.

Bad News Factor

To determine the "Bad News Factor" we analyze a stock's declines in rising markets. In this purely objective analysis, the actual reasons for a stock's behavior are not important. If a stock price falls while its relative index goes up, it can be assumed that the stock's performance has been affected by bad news - hence the name, "Bad News Factor".

Here a stock's movements are measured on a bi-weekly basis, during a sliding 52 week period. Every time a stock drops while its reference index rises, the difference is calculated in %, integrated into a yearly average and expressed in basis points.

The higher the "Bad News Factor," the more a stock has proven to be sensitive to bad news. The lower the "Bad News Factor," the less the stock has proven to be sensitive to bad news.

Bear Market Factor

To determine the "Bear Market Factor" we analyze a stock's price movements in declining markets.

This is the analysis of the movements, in a bi-weekly intervals, during a sliding 52 week period.

The higher the "Bear Market Factor," the greater the probability a stock would drop when its relative index drops.

A "Bear Market Factor" that is strongly negative means the stock has been more resistant to losses in declining markets.

Risk Zone

The price developments of stocks are generally volatile and contain high risks that can result in a total loss. Based on a their historical behavior, stocks are classified by risk levels. These risk levels have to be considered solely in relative historic comparison to other stocks. Please note that even "Low Risk" stocks are equities and therefore high risk investments that can lose up to all of their value, and that based on the past no firm conclusions can be taken into the future.

Risk zones are determined by measuring the "Bear Market Factor" and the "Bad News Factor" against a world reference.

There are three types of risk ratings:

- Low Risk: The risk indicators fall below the world reference average.
- Medium Risk: The risk indicators are situated higher than the world reference average, but lower than one standard deviation.
- High Risk: The risk indicators are at levels higher than one standard deviation.

Volatility 12 M

Volatility is also used as a risk factor. It measures the magnitude of the high and low movements of a stock or index. The higher the volatility, the more risky a stock is considered to be.

% of Stocks in Uptrend

This is the percentage of stocks in a given list that have a positive Medium Term Technical Trend. If, for example, the aggregate of Technology / World, (which is made up of 458 stocks) has 8% "of stocks in Uptrend," it means that 38 of the stocks within that aggregate have a positive Medium Term Technical Trend.

Beta

Beta is often used as a measure of risk. Where a Beta is greater than 100, the stock is more volatile than its reference index and therefore more risky.

Correlation

Correlation is the degree of similarity (in %) in which a stock fluctuates in relation to its reference index.

Disclaimer:

This report is provided for your personal information only, and does not constitute or contain any solicitation, financial advice, or offer to buy or sell any kind of securities. This report was based on sources that we consider reliable, but we do not warrant the accuracy and exhaustiveness of the information, opinions and quotes provided. Past performance is no guarantee of future results.

More information: www.thescreener.com/en/wc/methodology.htm

Earnings forecasts provided by THOMSON REUTERS.