



Medical Equipment

Sector WO

Analysis of 13-Jul-2022

Closing Price of 12-Jul-2022

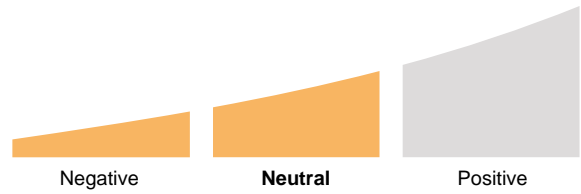
The sector Medical Equipment represents approximately 25% of the market capitalization of the group Health Care and approximately 3% of the World market with 145 companies being regularly followed by the Screener.

The sector is currently trading 26% below its 52 week high and 6% above its 52 week low (bi-weekly closing).

Performance since July 13, 2021: -19.3% vs. -4.2% for the group Health Care and -10.0% for the TSC_World.

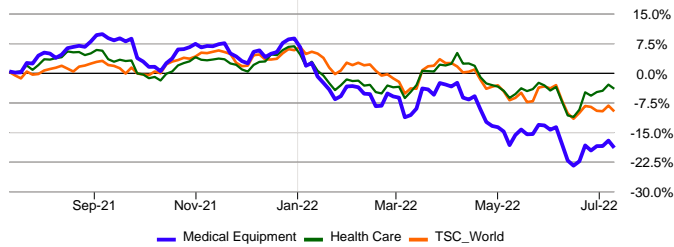
The current % of stocks over their Medium Term technical trend (MTT) is 31.7%.

Global Evaluation

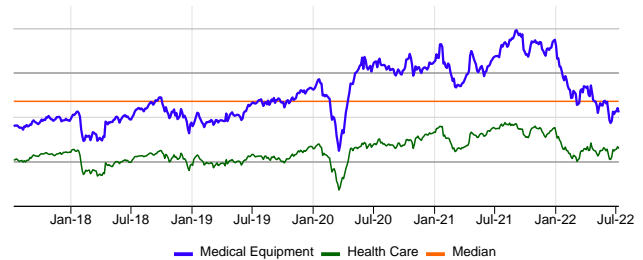


	Market Value	Perf YtD	Nb of Stocks	Mkt Cap in \$bn	Stars	Sensitivity	LT P/E	LT Growth	4wk Rel Perf	Div	Global Evaluation
Medical Equipment (WO)	407.88	-25.6%	145	2,224.74	★★★★☆		20.4	14.9%	3.6%	0.9%	
Health Care (WO)	325.17	-10.1%	559	8,767.88	★★★★☆		16.4	12.8%	7.0%	1.6%	
TSC_World (WO)	374.80	-14.7%	6,759	87,299.71	★★★★☆		10.0	16.1%	0.6%	2.9%	

Comparison July 13, 2021 - July 12, 2022



"Price to Estimated Earnings" (PE) - Evolution over five years
The estimated PE is calculated on the basis of the underlying stocks.
The sector is currently trading below its historical median of 21.7.



Price evaluation rating ★

In order to assess how an index is valued, we compare, among other, the projected earnings growth and dividend with the estimated PE ratio.

Based on this approach, we feel this sector is currently slightly overvalued.

The G/PE ratio below 0.9 indicates that investors must pay a premium for the estimated growth potential: 16.3% premium.

Earnings revision trend ★

Compared to seven weeks ago, the analysts have not significantly revised their earnings estimates (changes between +1% and -1% are considered neutral). But the underlying trend has been positive since June 10, 2022 at a price of 413.1.

Technical Trend and Performance ★★

The sector is currently at a level close to its 40-day moving average. Prior to this (since April 22, 2022), the sector traded below its moving average. The confirmed Technical Reverse point is currently 3% higher.

Checklist

Nyon, 13-Jul-2022 06:30 GMT+1

Global Evaluation	Neutral
Interest	★★★★☆ Weak interest since July 1, 2022.
Earnings Rev Trend	★ Analysts neutral but previously positive (since June 10, 2022)
Valuation Rating	★ Moderately overvalued
MT Tech Trend	★ Market neutral but previously negative (since April 22, 2022)
4wk Rel Perf	★ vs. TSC_World
Sensitivity	The industry has been on the moderate-sensitivity level since February 4, 2022.

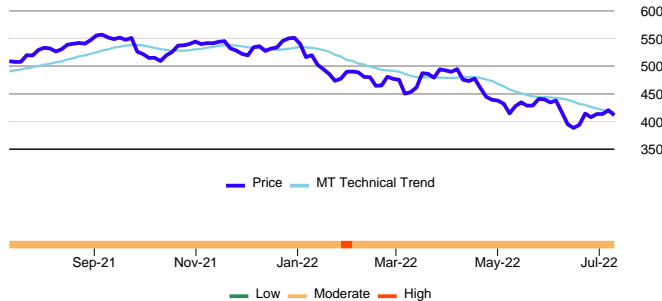
Comparison July 14, 2017 - July 12, 2022



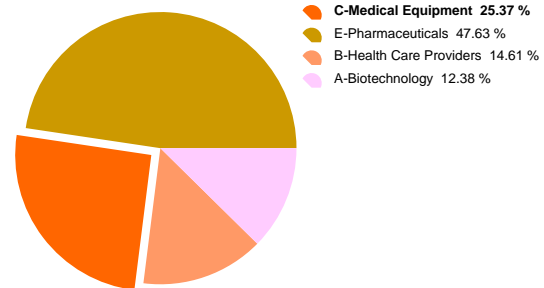


	Market Value	Perf YtD	Nb of Stocks	Mkt Cap in \$bn	Stars	Sensitivity	LT P/E	LT Growth	4wk Rel Perf	Div	Global Evaluation
Medical Equipment (WO)	407.88	-25.6%	145	2,224.74	★★★★☆		20.4	14.9%	3.6%	0.9%	

Price & Sensitivity Evolution



Allocation by sector, of the group Health Care



Volatility

The volatility is also used as a sensitivity factor. It measures the magnitude of the upward and downward movements of a stock or index. The higher the volatility, the more sensitive a sector is considered to be.

As of the last update, the monthly volatility of (24.7%) is higher than the last few years' average of (15.3%). The high magnitude of short term price fluctuations indicates the market is very nervous. On the other hand, long term volatility 20.7% of the sector is clearly higher than that of the group Health Care (15.0%), reflecting much higher price variations at the sector level than at the level of the group to which it belongs.

Sensitivity factor in declining markets

The "Bear Market Factor" measures the behavior of a sector in declining markets. In this context, the sector Medical Equipment has a tendency to drop in the same proportion as the index TSC_World. The sector shows average sensitive reactions to market corrections.

Sensitivity factor in rising markets

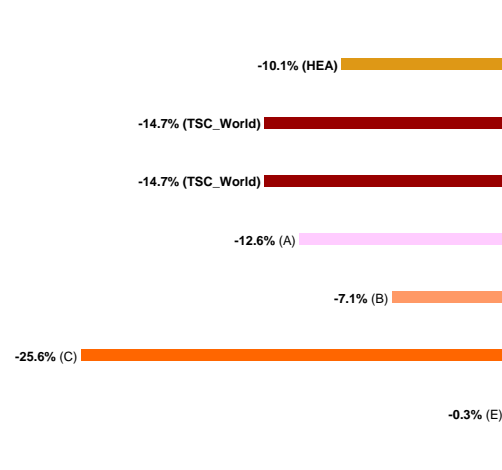
The "Bad News Factor" measures a sector's corrections in a rising market phase. In this configuration, the market slightly sanctions the sector Medical Equipment when there is specific pressure in this particular economic activity. When the sector declines in a rising market its average deviation is -1.33%.

Sensitivity analysis summary

Generally speaking, the Medical Equipment sector shows an average sensitive behaviour with an average Bear Market and a low Bad News factor.

The largest sector in terms of market capitalization Pharmaceuticals represents 47.6% of the group Health Care. These sectors follow, in size order, Medical Equipment with 25.4% and Health Care Providers with 14.6%.

2022 sector evolution



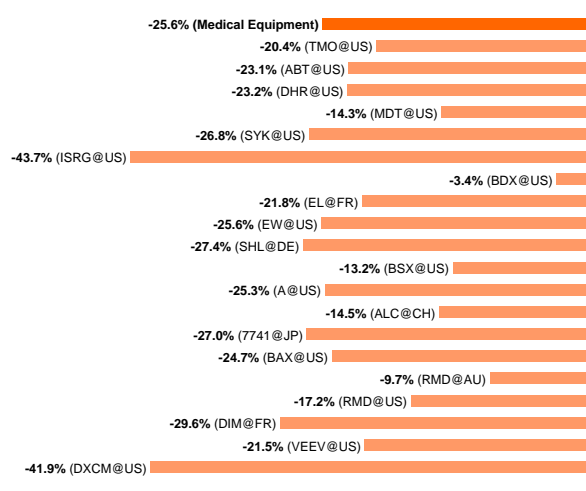
From the beginning of the year, the sector Medical Equipment recorded a variation of -25.6%, while the group Health Care evolved by -10.1%. This industry group is made up of 4 sectors, in which the extreme variations were from -25.6% to -0.3%.



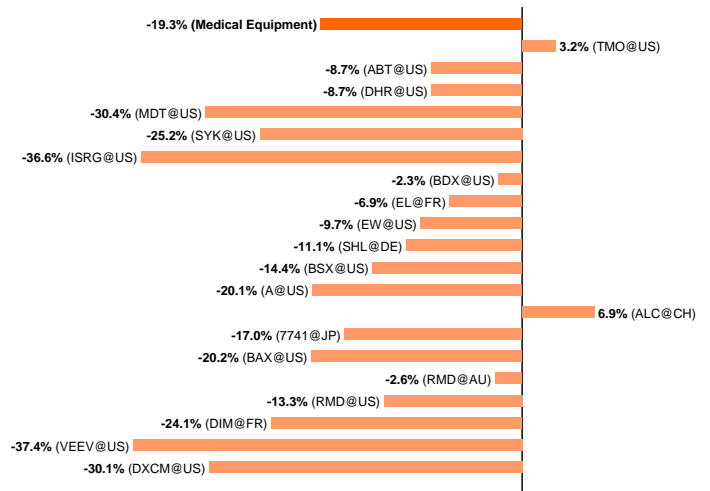
	Market Value	Perf YtD	Nb of Stocks	Mkt Cap in \$bn	Stars	Sensitivity	LT P/E	LT Growth	4wk Rel Perf	Div	Global Evaluation
Medical Equipment (WO)	407.88	-25.6%	145	2,224.74	★★★★☆		20.4	14.9%	3.6%	0.9%	

The performance of the 20 largest stocks of the sector is presented below.

Year to date performance



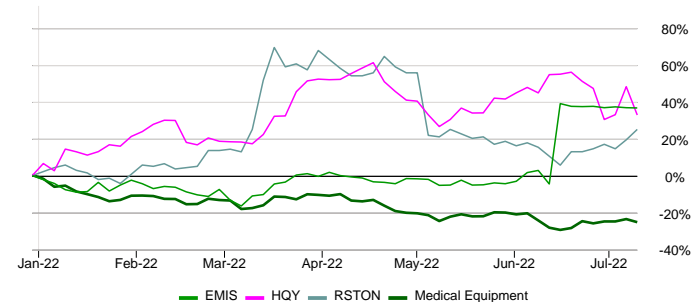
12 months performance



The analysis and details of the above stock can be found on page 6

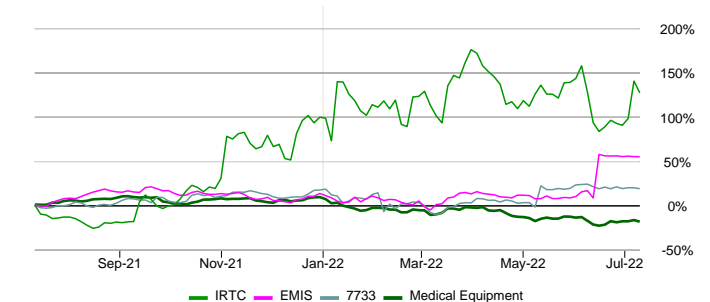
The analysis and details of the above stock can be found on page 6

Top Stocks 2022



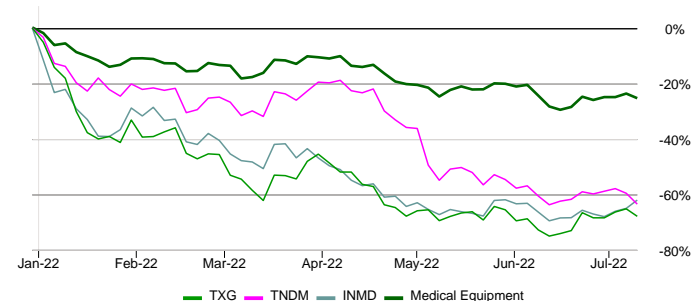
From the beginning of the year, the performance of the sector was -25.6%; as for the three best stocks, (EMIS GROUP (EMIS), HEALTHEQUITY (HQY) and RIVERSTONE HOLDINGS (RSTON)), their performance was 36.6%, 32.8% and 25.0% respectively.

Top Stocks 12 months



Since 12 months ago, the performance of the sector has been -19.3%; the three best stocks, (IRHYTHM TECHNOLOGIE (IRTC), EMIS GROUP (EMIS) and OLYMPUS (7733)) recorded a performances of 126.7%, 54.6% and 18.6% respectively.

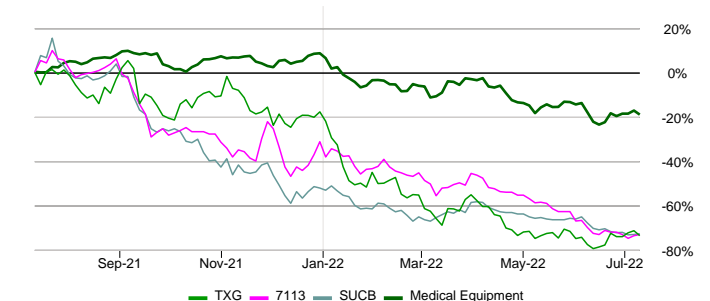
Flop Stocks 2022



10X GENOMICS INCO. (TXG), TANDEM DIABETES CARE (TNDM) and INMODE (INMD) with -68.0%, -63.6% and -62.1% recorded the three worst performances from the beginning of the year. For the sector Medical Equipment, the variation was -25.6%.

Only companies with a market capitalization exceeding \$500 million are mentioned.

Flop Stocks 12 months



The three worst performances in 12 months were recorded by 10X GENOMICS INCO. (TXG), TOP GLOVE CORPORATION (7113) and SUPERMAX CORPORATION (SUCB) with -73.7%, -73.2% and -72.9%. As for the sector Medical Equipment, it recorded a variation of -19.3%.



The stock selection below has been specifically chosen for this univers. **The proposals cannot consider the reader's personal financial situation nor his appetite or aversion to risk; stock ownership should not be assessed either if appropriate to the reader. Please request personalised alternatives from your financial advisor.**

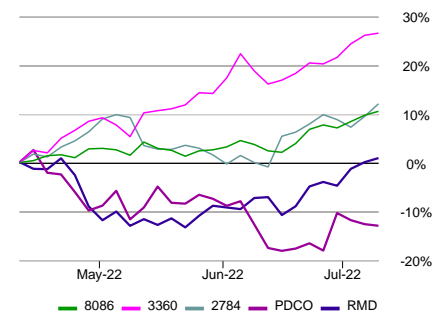
Stocks of interest

Company Name	Market	Group	Best Evaluation	Defensive Stocks	High Dividends	Low PE
ALFRESA HOLDINGS	JP	Health Care	✓	✓		
ANSELL	AU	Health Care				✓
EMIS GROUP	GB	Health Care		✓		
GERRESHEIMER	DE	Health Care				✓
NIHON KOHDEN	JP	Health Care		✓		
NIPRO	JP	Health Care	✓			✓
PATTERSON COMPANIES	US	Health Care	✓		✓	✓
RESMED INCO.	AU	Health Care	✓	✓		
SHIP HEALTHCARE HOLDINGS	JP	Health Care	✓	✓		
SMITH & NEPHEW	GB	Health Care				✓

Stocks with the best valuations

Symbol Market	Name Sector	Price Ccy	Mkt Cap in \$bn	7wk EPS Rev	Stars	Sensitivity	Global Evaluation
8086 JP	NIPRO Medical Equipment	1,103.00 JPY	1.38	17.1%	★★★★★		
3360 JP	SHIP HEALTHCARE HOLDINGS Medical Equipment	2,544.00 JPY	1.89	15.9%	★★★★★		
2784 JP	ALFRESA HOLDINGS Medical Equipment	1,867.00 JPY	3.21	38.7%	★★★★★		
PDCO US	PATTERSON COMPANIES Medical Equipment	29.70 USD	2.87	10.7%	★★★★★		
RMD AU	RESMED INCO. Medical Equipment	32.32 AUD	31.57	5.4%	★★★★★		

Evolution over the last 3 months



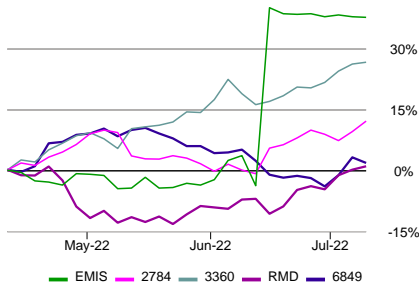
The Global Evaluation is a multi-criteria approach to identify the stocks with the best overall outlook. The assessment is the compilation of fundamental (PE, growth, earnings revisions, dividend, etc.), technical (moving average, relative performance), and sensitivity (behaviour in declining markets and sensitivity to bad news) factors. In order to present a relevant selection, only companies with a market capitalization above \$1bn and showing good earnings growth valuations, are listed. Furthermore, the eligible stocks must have a minimum rating of two stars, a neutral to positive valuation, and a low to moderate sensitivity. When the global rankings are identical, the analysts' 7 week earnings per share revision (7 wk EPS rev) acts as the deciding classification element.



	Market Value	Perf YtD	Nb of Stocks	Mkt Cap in \$bn	Stars	Sensitivity	LT P/E	LT Growth	4wk Rel Perf	Div	Global Evaluation
Medical Equipment (WO)	407.88	-25.6%	145	2,224.74	★★★★☆		20.4	14.9%	3.6%	0.9%	

The best defensive stocks

Evolution over the last 3 months



Symbol Market	Name Sector	Price Ccy	Mkt Cap in \$bn	Bear Mkt Factor	Stars	Sensitivity	Global Evaluation
EMIS GB	EMIS GROUP Medical Equipment	1,858.00 GBP	1.39	-157	★★★★☆		
2784 JP	ALFRESA HOLDINGS Medical Equipment	1,867.00 JPY	3.21	-120	★★★★☆		
3360 JP	SHIP HEALTHCARE HOLDINGS Medical Equipment	2,544.00 JPY	1.89	-74	★★★★☆		
RMD AU	RESMED INCO. Medical Equipment	32.32 AUD	31.57	-68	★★★★☆		
6849 JP	NIHON KOHDEN Medical Equipment	2,940.00 JPY	1.90	-61	★★★★☆		

The sensitivity assessment is based on essentially two criteria: the stock's "behaviour in declining markets" (Bear Market Factor), and the stock's "sensitivity to bad news" (Bad News Factor). By positioning a stock according to the world averages, three sensitivity levels can be attributed (low, moderate, high). Combining these elements makes it possible to create a final ranking of stocks in the market. To present the most useful selection, only companies with a market capitalization greater than \$1bn and showing good earnings growth valuations are listed. Furthermore, the eligible stocks must have a minimum rating of two stars, a neutral to positive valuation, and a low to moderate sensitivity. In case of a tie, the stock's "behaviour in declining markets" will act as the deciding classification element.

The stocks with attractive dividends

Symbol Market	Name Sector	Price Ccy	Mkt Cap in \$bn	Div	Stars	Sensitivity	Global Evaluation
PDCO US	PATTERSON COMPANIES Medical Equipment	29.70 USD	2.87	3.9%	★★★★☆		

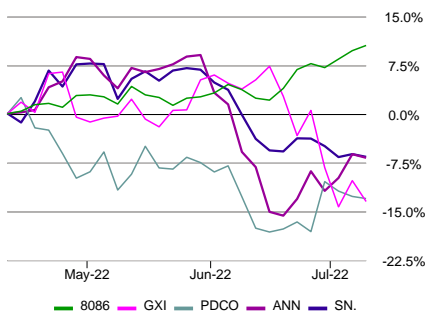
Evolution over the last 3 months



Within this category, the equities that have been chosen are based on the expected dividend yield over the next 12 months. The selection takes into consideration only companies with payout dividends totalling not more than 70% of their forecasted income. This is to ensure that only companies are included that show a strong potential for a continued payout of dividends in the future. This profile also requires a minimum of 2 stars and a market value greater than one billion USD.

The stocks with the lowest PE

Evolution over the last 3 months



Symbol Market	Name Sector	Price Ccy	Mkt Cap in \$bn	LT P/E	Stars	Sensitivity	Global Evaluation
8086 JP	NIPRO Medical Equipment	1,103.00 JPY	1.38	8.5	★★★★☆		
GXI DE	GERRESHEIMER Medical Equipment	57.95 EUR	1.83	9.3	★★★★☆		
PDCO US	PATTERSON COMPANIES Medical Equipment	29.70 USD	2.87	11.1	★★★★☆		
ANN AU	ANSELL Medical Equipment	23.42 AUD	2.02	11.5	★★★★☆		
SN GB	SMITH & NEPHEW Medical Equipment	1,130.50 GBP	11.73	12.3	★★★★☆		

The price to earnings ratio (PE) may help to find undervalued stocks. If the PE of a stock is much lower than the PE of its reference market, the stock could have upside price potential. In order to present a relevant selection, only companies with a market capitalization greater than \$1bn and showing good earnings growth valuations are listed. Furthermore, the eligible stocks must have: a minimum rating of two stars, a neutral to positive valuation, a low to moderate sensitivity. When the PE ratios are identical, the analysts' 7 week earnings per share revision (7 wk EPS rev) acts as the deciding classification element.



Medical Equipment

Sector WO

Analysis of 13-Jul-2022

Closing Price of 12-Jul-2022

	Market Value	Perf YtD	Nb of Stocks	Mkt Cap in \$bn	Stars	Sensitivity	LT P/E	LT Growth	4wk Rel Perf	Div	Global Evaluation
Medical Equipment (WO)	407.88	-25.6%	145	2,224.74	★★★★☆		20.4	14.9%	3.6%	0.9%	

The 20 top stocks classified by market capitalization

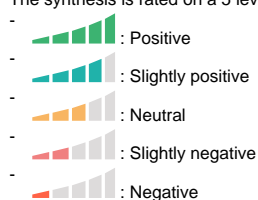
Symbol Market	Name Sector	Price Ccy	Perf YtD	Mkt Cap in \$bn	Stars	Sensitivity	LT P/E	LT Growth	4wk Rel Perf	Div	Global Evaluation
TMO US	THERMO FISHER SCIENTIFIC Medical Equipment	530.93 USD	-20.4%	207.84	★★★★☆		18.7	13.5%	2.9%	0.2%	
ABT US	ABBOTT LABORATORIES Medical Equipment	108.30 USD	-23.0%	189.63	★★★★☆		20.6	12.3%	0.9%	1.7%	
DHR US	DANAHER Medical Equipment	252.70 USD	-23.2%	183.73	★★★★☆		21.2	14.3%	2.6%	0.4%	
MDT US	MEDTRONIC Medical Equipment	88.69 USD	-14.3%	117.84	★★★★☆		13.2	9.5%	-2.0%	3.1%	
SYK US	STRYKER Medical Equipment	195.72 USD	-26.8%	74.01	★★★★☆		16.8	13.3%	-7.3%	1.5%	
ISRG US	INTUITIVE SURGICAL Medical Equipment	202.13 USD	-43.7%	72.56	★★★★☆		30.6	22.3%	0.6%	0.0%	
BDX US	BECTON DICKINSON Medical Equipment	236.92 USD	-3.4%	67.54	★★★★☆		19.5	13.8%	-2.9%	1.5%	
EL FR	ESSILORLUXOTTICA Medical Equipment	146.45 EUR	-21.8%	65.85	★★★★☆		19.9	16.3%	4.5%	2.1%	
EW US	EDWARDS LIFESCIENCES Medical Equipment	96.34 USD	-25.6%	59.90	★★★★☆		29.9	21.3%	5.7%	0.0%	
SHL DE	SIEMENS HEALTHINEERS Medical Equipment	48.05 EUR	-27.4%	54.47	★★★★☆		18.1	13.1%	-7.7%	2.2%	
BSX US	BOSTON SCIENTIFIC Medical Equipment	36.88 USD	-13.2%	52.72	★★★★☆		16.4	14.3%	1.2%	0.0%	
A US	AGILENT TECHNOLOGIES Medical Equipment	119.24 USD	-25.3%	35.62	★★★★☆		19.4	15.6%	1.1%	0.7%	
ALC CH	ALCON AG Medical Equipment	69.04 CHF	-14.5%	35.16	★★★★☆		21.3	19.7%	1.0%	0.4%	
7741 JP	HOYA Medical Equipment	12,485.00 JPY	-27.0%	33.77	★★★★☆		18.0	14.4%	-0.7%	1.0%	
BAX US	BAXTER INTERNATIONAL Medical Equipment	64.68 USD	-24.7%	32.57	★★★★☆		12.9	12.9%	-9.4%	1.8%	
RMD US	RESMED Medical Equipment	215.78 USD	-17.2%	31.57	★★★★☆		30.9	22.3%	5.6%	0.8%	
RMD AU	RESMED INCO. Medical Equipment	32.32 AUD	-9.7%	31.57	★★★★☆		31.1	22.6%	13.4%	0.8%	
DIM FR	SARTORIUS STEDIM BIOTECH Medical Equipment	339.80 EUR	-29.6%	31.48	★★★★☆		31.2	21.5%	10.6%	0.6%	
VEEV US	VEEVA SYSTEMS INC Medical Equipment	200.48 USD	-21.5%	31.04	★★★★☆		41.1	27.7%	11.3%	0.0%	
DXCM US	DEXCOM Medical Equipment	78.05 USD	-41.9%	30.63	★★★★☆		53.3	42.3%	8.3%	0.0%	

Glossary - Equities

Global Evaluation

The rating results from several factors : fundamental and technical analysis, measure of sensitivity and benchmark trend.

The synthesis is rated on a 5 level scale:



The synthesis for the Indices and Industries is rated on a 3 level scale: Positive, Neutral and Negative.

Number of Stocks

The number of stocks in the index that can be analyzed.

Mkt Cap in \$bn

This number represents the Market Capitalization in USD bn. It is calculated by multiplying a firm's share price by the number of outstanding shares. For reasons of comparison, all results are in USD.

Valuation Rating

Our Valuation Rating indicates if a stock is "expensive" or "cheap" relative to its growth potential. This is used to determine whether or not the investor is paying a premium for anticipated growth.

To estimate a stock's value relative to its current price, our Valuation Rating combines:

- stock price
- projected earnings
- projected earnings growth
- dividends

We establish our rating by combining these elements.

There are five ratings, ranging from strongly undervalued 🟢🟢 to strongly overvalued 🔴🔴.

Stars

theScreener.com's star rating system is designed to enable you to identify high-quality stocks quickly and easily.

In this easy-to-use rating system, stars are earned for each element specified below:

- Earnings Rev Trend 🟢 = ★★★★★
- Valuation Rating 🟢, 🟢🟢, 🟢🟢🟢 = ★★★★★
- MT Tech Trend 🟢 = ★★★★★
- 4 week Relative Performance > 1% = ★★★★★

Therefore, a stock can earn a maximum of four stars.

The lowest rating a stock can have is no stars.

Once a stock has earned a star, it will keep it until:

- Earnings Rev Trend becomes negative 🔴
- Valuation Rating becomes negative 🔴, 🔴🔴
- MT Tech Trend becomes negative 🔴
- 4 week Relative Performance drops below -1% (<-1%)

Div

This is the dividend in % for the next 12 months.

Even if the same number is shown, the dividend value can appear in one of four colors, depending on the earnings coverage:

- 0%, no dividend
- 4%, the dividends are covered (between 0% and 40% of earnings)
- 4%, the dividends represent between 40% and 70% of earnings
- 4%, the dividends are higher than 70% of earnings, which implies that the dividend coverage is not guaranteed.

Earnings Rev. Trend

The symbol 🟢 shows that compared with their earnings revisions of seven weeks ago, the analysts have now raised their estimates (7wk EPS Rev; > 1%); the symbol 🔴 indicates that compared with their earnings revisions of seven weeks ago, the analysts have now lowered their estimates (7wk EPS Rev < -1%).

When the earnings revisions (7wk EPS Rev) fall between +1% and -1%, the trend is considered to be neutral 🟡.

The symbol 🟢 indicates that the last significant revisions have been trending positive.

The symbol 🔴 indicates that the last significant revisions have been negative.

7wk EPS Rev

This is an abbreviation for 7 week Earnings Per Share Revision. This column indicates the value of these revised earnings. A figure of 2.8 signifies that compared with seven weeks

ago, the analysts have now revised and raised their estimates by 2.8%. On the contrary, a negative number means that the earnings would have been revised lower.

G/PE Ratio

In order to establish our Valuation Rating, we calculate the estimated growth of future earnings (LT Growth) plus dividend in %, divided by the estimated future PE ratio (Long Term P/E).

LT PE

This is the relationship between the price (P) and the estimated long-term future earnings.

LT Growth

This is the estimated annual growth rate of future earnings, normally projected over the next two to three years.

MT Tech Trend

The MT Tech Trend indicates the current trend, positive 🟢 or negative 🔴, and the Tech Reverse indicates up to which price this trend will remain valid.

When a price falls to 1.75% above or below the Tech Reverse, the MT Tech Trend is considered neutral 🟡.

Once the price breaks out of the +1.75% neutral zone, the MT Tech Trend will change to positive.

The symbol 🟢 indicates that the previous MT Tech Trend was positive.

The symbol 🔴 indicates that the previous MT Tech Trend was negative.

4-week (Relative) Performance

This figure measures the dividend-adjusted performance of a stock relative to its national or regional index (compared to four weeks ago). As for an Index, it measures the net performance over 4 weeks.

Bad News Factor

To determine the "Bad News Factor" we analyze a stock's declines in rising markets. In this purely objective analysis, the actual reasons for a stock's behavior are not important. If a stock price falls while its relative index goes up, it can be assumed that the stock's performance has been affected by bad news - hence the name, "Bad News Factor".

Here a stock's movements are measured on a bi-weekly basis, during a sliding 52 week period. Every time a stock drops while its reference index rises, the difference is calculated in %, integrated into a yearly average and expressed in basis points.

The higher the "Bad News Factor," the more a stock has proven to be sensitive to bad news. The lower the "Bad News Factor," the less the stock has proven to be sensitive to bad news.

Bear Market Factor

To determine the "Bear Market Factor" we analyze a stock's price movements in declining markets.

This is the analysis of the movements, in a bi-weekly intervals, during a sliding 52 week period. The higher the "Bear Market Factor," the greater the probability a stock would drop when its relative index drops.

A "Bear Market Factor" that is strongly negative means the stock has been more resistant to losses in declining markets.

Sensitivity

Stock price developments are generally volatile and contain high risks that can result in a total loss. Based on a their historical behaviour, stocks are classified by sensitivity level. These sensitivity levels have to be considered solely in relative historical comparison to other stocks. Please note that even "Low Sensitivity" stocks are equities and therefore high risk investments that can lose up to all of their value, and that past performance is no indication of current or future performance.

"Sensitivity" is determined by measuring the "Bear Market Factor" and the "Bad News Factor" against its benchmark.

There are three grades of sensitivity levels:

- Low Sensitivity: The sensitivity indicators fall below the world reference average.
- Moderate Sensitivity: The sensitivity indicators are situated higher than the world reference average, but lower than standard deviation.
- High Sensitivity: The sensitivity indicators are at levels higher than standard deviation.

Volatility 12 M

Volatility measures the magnitude of upwards and downwards movements of a stock or index. The volatility 12 M shows the average volatility over the last 12 months.

% of Stocks in Uptrend

This is the percentage of stocks in a given list that have a positive Medium Term Technical Trend. If, for example, the aggregate of Technology / World, (which is made up of 458 stocks) has 8% "of stocks in Uptrend," it means that 38 of the stocks within that aggregate have a positive Medium Term Technical Trend.

Beta

Beta is often used as a measure of sensitivity. Where a Beta is greater than 100, the stock is more volatile than its reference index.

Correlation

Correlation is the degree of similarity in which a stock fluctuates in relation to its reference index.

Disclaimer:

This report is provided for your personal information only, and does not constitute or contain any solicitation, financial advice, or offer to buy or sell any kind of securities. This report was based on sources that we consider reliable, but we do not warrant the accuracy and exhaustiveness of the information, opinions and quotes provided. Past performance is no guarantee of future results.

If the investment currency differs from the currency of the investment instrument, currency fluctuations can have a strong influence on the performance of the investment instrument, so that it can be significantly higher or lower.

More information: www.thescreener.com/home/method/

Price data, financial ratios and earnings estimates provided by REFINITIV